

# CCU Regular Board Meeting

Presentation to:  
Consolidated Commission on Utilities  
February 25, 2025

# GM REPORT

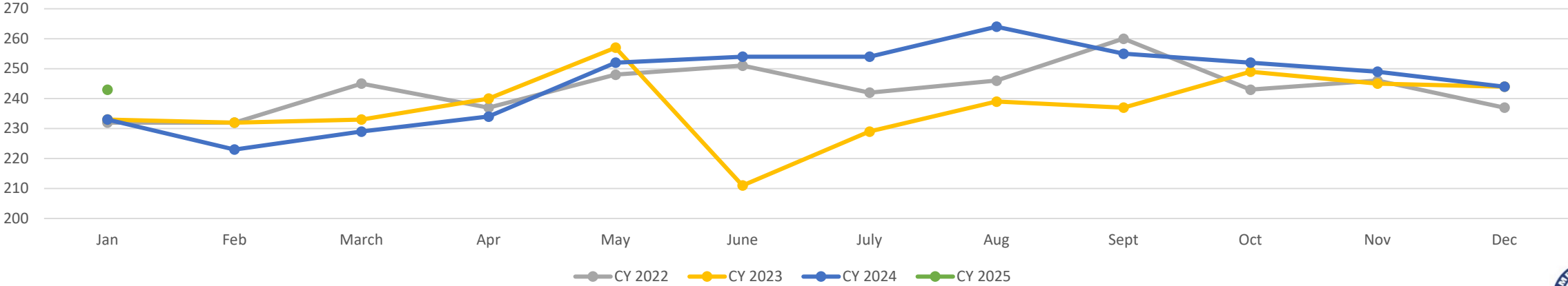
# General Manager's Report

## Reserve Margin Forecast for March 2025:

Targeted Available Capacity:	308 MW
Projected Demand:	235 MW
Anticipated Reserve Margin:	73 MW
Interruptible Load Availability:	16 MW
Navy Assistance (Orote)	12 MW
Total Reserves:	101 MW

## System Peak Demand:

MONTHLY PEAK DEMAND  
THRU January 2025



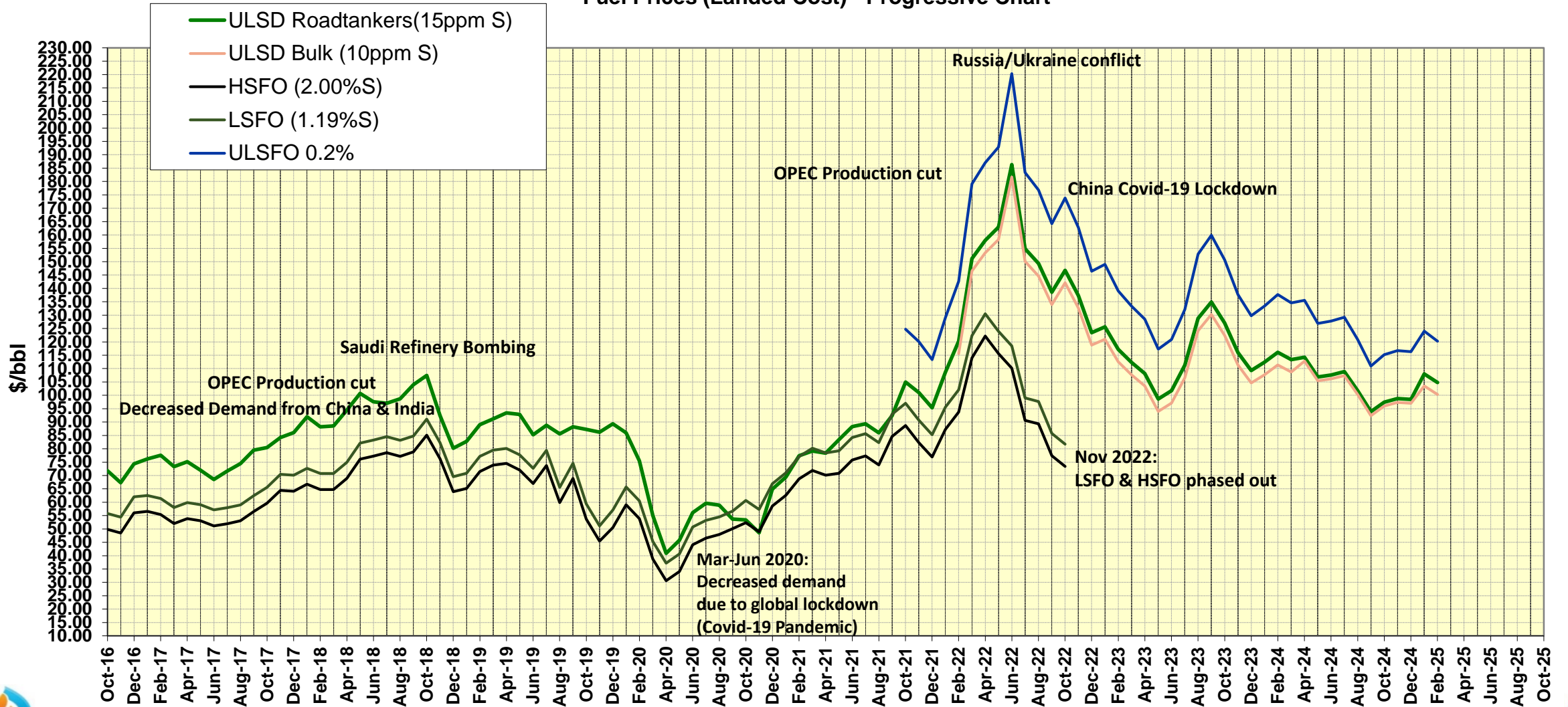
# General Manager's Report

GPA Fuel Landed Cost (Per Barrel as of February 17, 2025)

ULSRFO 0.2% \$120.24

ULSD Bulk \$100.29

Fuel Prices (Landed Cost) - Progressive Chart



# General Manager's Report

## DSM Online Report – January 2025

### OVERALL COUNTS

Month	ALL			COMMERCIAL			RESIDENTIAL		
	Applications	Equipment	Rebates	Applications	Equipment	Rebates	Applications	Equipment	Rebates
FY-2022*	696	983	\$ 196,075	7	12	\$ 1,950	689	971	\$ 194,125
FY-2023	5,721	8,007	\$ 1,621,850	67	101	\$ 19,350	5,654	7,906	\$ 1,602,500
FY-2024	5,304	7,494	\$ 1,522,850	81	116	\$ 34,400	5,223	7,378	\$ 1,488,450
Oct-24	503	756	\$ 150,725	9	14	\$ 4,150	494	742	\$ 146,575
Nov-24	340	483	\$ 100,000	1	1	\$ 100	339	482	\$ 99,900
Dec-24	468	693	\$ 139,325	5	11	\$ 2,050	463	682	\$ 137,275
Jan-25	472	691	\$ 140,650	1	2	\$ 600	471	689	\$ 140,050
Feb-25									
Mar-25									
Apr-25									
May-25									
Jun-25									
Jul-25									
Aug-25									
Sep-25									
<b>TOTAL</b>	<b>13,504</b>	<b>19,107</b>	<b>\$ 3,871,475</b>	<b>171</b>	<b>257</b>	<b>\$ 62,600</b>	<b>13,333</b>	<b>18,850</b>	<b>\$ 3,808,875</b>
<b>Monthly Averages (FY25)</b>	<b>446</b>	<b>656</b>	<b>\$ 132,675</b>	<b>4</b>	<b>7</b>	<b>1,725</b>	<b>442</b>	<b>649</b>	<b>\$ 130,950</b>

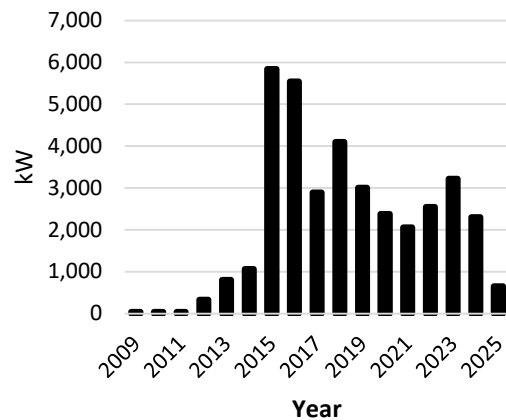
# General Manager's Report

## NET METERING JANUARY 2025

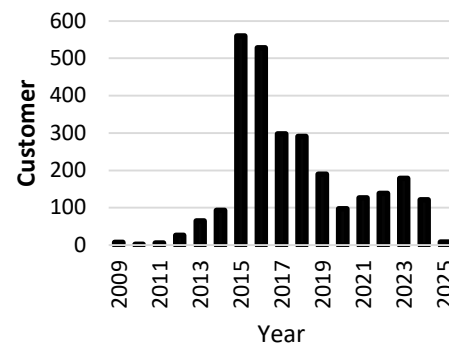
Installed kW by Year		
Year	Total	Cumulative
2009	39	39
2010	39	79
2011	42	120
2012	335	455
2013	803	1,258
2014	1,067	2,325
2015	5,843	8,168
2016	5,541	13,709
2017	2,887	16,596
2018	4,096	20,692
2019	3,005	23,697
2020	2,380	26,077
2021	2,059	28,136
2022	2,549	30,685
2023	3,218	33,903
2024	2,303	36,206
2025	654	
<b>Grand Total</b>	<b>36,860</b>	

Customer Count by Year		
Year	Total	Cumulative
2009	7	7
2010	2	9
2011	6	15
2012	26	41
2013	65	106
2014	93	199
2015	560	759
2016	528	1,287
2017	298	1,585
2018	291	1,876
2019	190	2,066
2020	97	2,163
2021	126	2,289
2022	138	2,427
2023	179	2,606
2024	121	2,727
2025	8	
<b>Grand Total</b>	<b>2,735</b>	

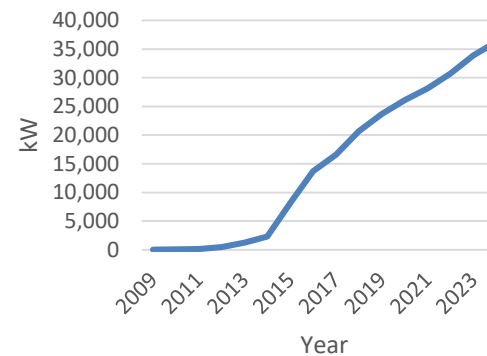
Yearly Installed kW



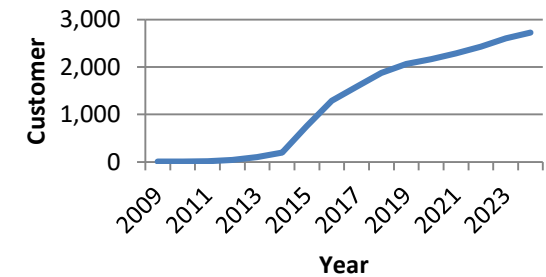
Yearly Connected Customer Count



Cumulative Installed kW



Cumulative Connected Customer Count



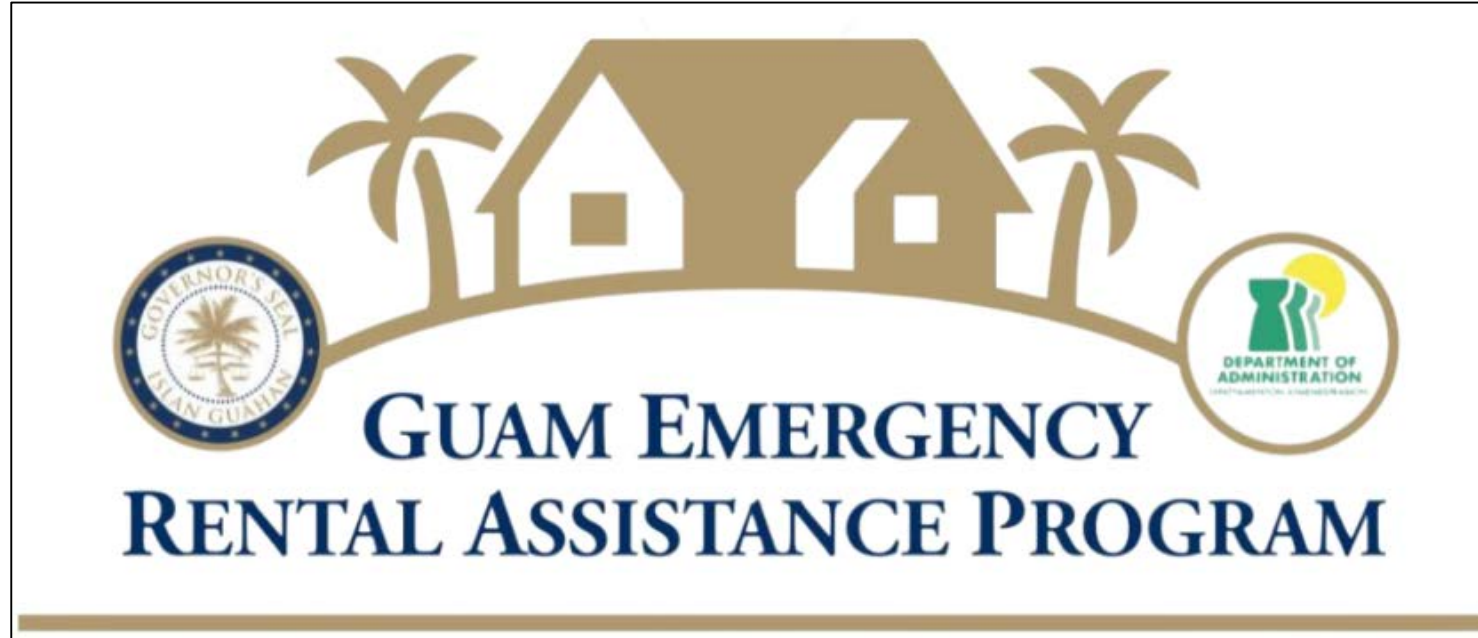
# General Manager's Report

## PUC Update:

- **Dockets heard and passed in the month of January 30, 2025:**
  - Docket No. 25-05: Petition of the Guam Power Authority to Reduce the Levelized Energy Adjustment Clause (LEAC) for the Period of February 1, 2025 through July 31, 2025; and
  - Docket No. 25-06: Petition of the Guam Power Authority to Approve the Solicitation of a Performance Management Contract for GPA's Combustion Turbine Power Plants.
  - ALJ Horecky has certified the KEPCO-EWP-Samsung 132MW renewable contract. Anticipated contract signing could occur within 2 weeks.
- **Dockets to be heard for the month of February 2025:**
  - GPA Docket No. 24-25 Petition of the Guam Power Authority to Approve Phase IV Renewable Energy Acquisition Award to KEPCO-EWP-Samsung C&T Consortium and Core Tech Solar Energy LLC, for up to 192MW of Renewable Energy Capacity; Certification of the Chief ALJ Concerning the GPA's Phase IV Renewable Energy Purchase Agreement with Kes Yona Solar LLC
  - GPA Docket No. 24-07 Petition of the Guam Power Authority for Authorization to Procure Strategic Program Management Office for GPA's Future Projects; Legal Counsel Report and proposed Order.
  - GPA Docket No. 25-08 Petition of the Guam Power Authority for Approval of Additional Projected Costs of Urea Supply Contract; ALJ Report; and proposed Order
- **Pending Dockets:**
  - Docket No. 24-03: Petition to Review 12 GCA § 8502(c)(2)(B) Relative to Net Metering - this docket will not be heard until further notice.

# General Manager's Report

## Customer Assistance



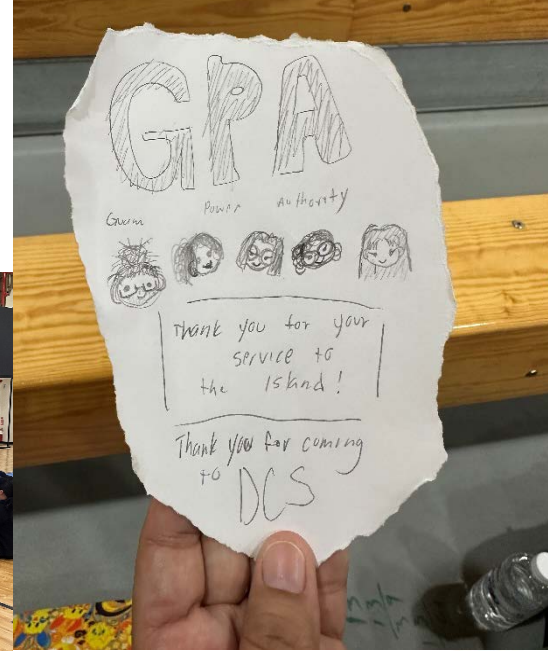
### Emergency Rental Assistance (ERA) Program

- On March 3, 2021, the Department of Administration (DOA) launched the ERA program to assist households affected by the COVID-19 pandemic that are unable to pay rent and utilities.
- \$158,615.73 was applied to qualified ratepayer accounts [Batches 331 - 337] for November 2024 through January 2025, totaling \$7,555,144.40 since the program's inception
- Cycle 6 of the program closed on January 21, 2025. No new applications are being accepted.
- Continuance requests will be accepted until March 31, 2025.

# General Manager's Report

## Customer Engagement & Community Outreach – Bishop Baumgartner & Dominican School

- As a part of Community Outreach, GPA Communications and SPORD division visited Bishop Baumgartner Catholic School and Dominican Catholic School to deliver their Energy-Efficiency and Conservation presentation.
- These presentations were delivered on Wednesday, January 22, 2025 and Tuesday, January 28, 2028, to a combined total of 317 students that were in attendance.
- SPORD Engineers taught students ways to save energy, how to be energy efficient, and why being sustainable is important. Students were also informed about how energy is generated, the types of energy sources (non-renewable and renewables), and the different ways GPA makes electrical energy.
- Communications staff presented the Beat-the-Peak campaign to the students, who were taught the importance of conserving energy during peak hours of 5 pm to 11 pm and different ways they could “Beat-the-Peak”.
- In addition, teachers and staff in attendance were informed on the Energy Sense rebate program and received information on how to get rebates for their schools and homes.



# General Manager's Report

## Ukudu Power Plant Construction Status

Plant construction progresses steadily. Major work includes: Installation of steam blowing insulation, BESS cable pulling, and ground compaction/asphalt work.

Actual accumulated progress including Engineering, Procurement, and Construction: **93.19%**  
(as of January 31, 2025)



# General Manager's Report

## Ukudu Power Plant Update:

### GPA Activities

- GPA is coordinating with GWA to facilitate acquisition of new NPDES permit.
- GPA crews successfully completed line transfers of H-710/H-760 to H-501, Ukudu to H-502, Ukudu to H-503 and H-612 to Ukudu on January 25<sup>th</sup>, 2025.

### GUP Activities

- Progress Summary – As of January 31, 2025

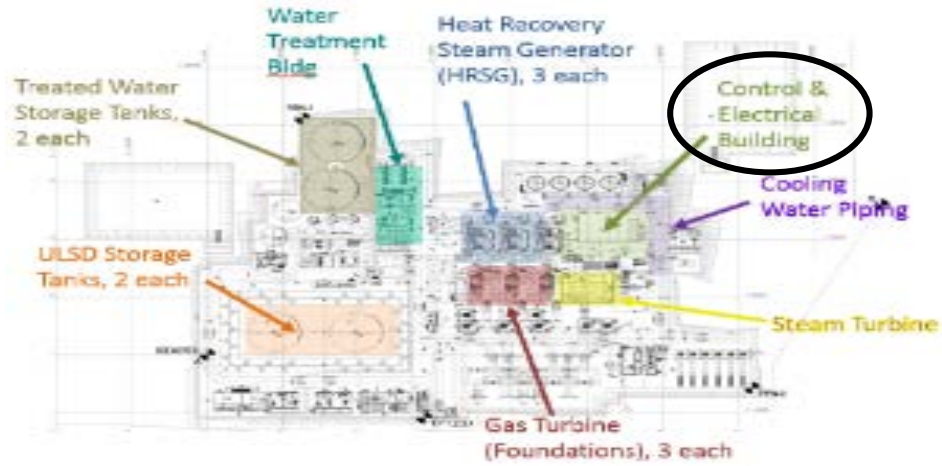
Work Area	Progress (%)
Engineering	89.98
Procurement	99.98
Construction	98.01
<b>Overall</b>	<b>93.19</b>

- Gas Turbine #1 initial firing was completed on February 12<sup>th</sup>, 2025.
- Gas Turbine #1 synchronized to the grid and began generating energy for commissioning and testing on February 18<sup>th</sup> 2025 at 11:20am at 5MW. Unit load tested up to 13MW.
- Testing to full load of 45MW scheduled for February 24, 2025.
- Gas Turbine #2 and #3 scheduled for testing in March 2025.

# General Manager's Report

## Ukudu Power Plant Construction Status

## Control & Electrical Building

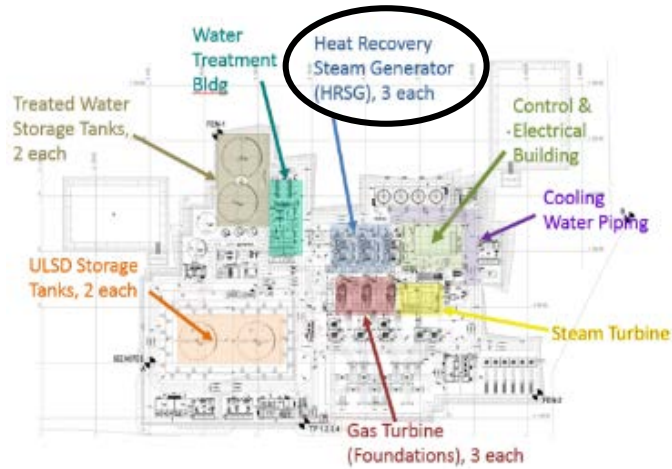


Cable pulling is ongoing



# General Manager's Report

## Ukudu Power Plant Construction Status Heat Recovery Steam Generator (HRSG)



## HRSG 1-3: Installation of insulation is ongoing



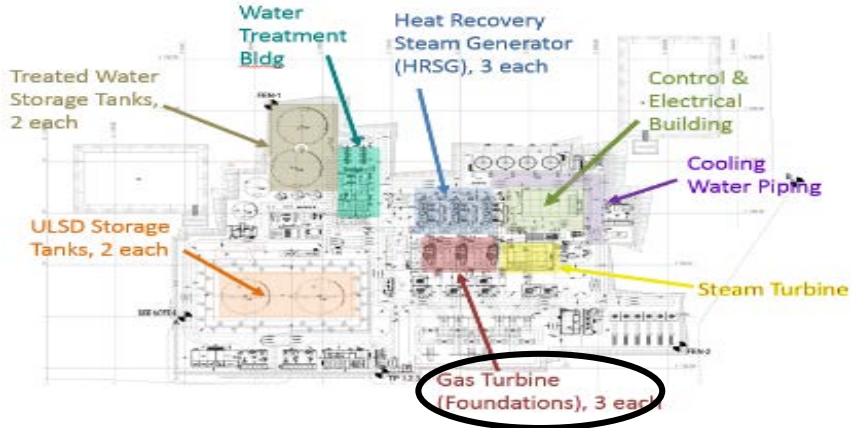
## Temporary steam blowing pipe fabrication between HRSG #1 and #2



# General Manager's Report

## Ukudu Power Plant Construction Status

### Gas Turbines & Generators



GT#1 stack during initial fire

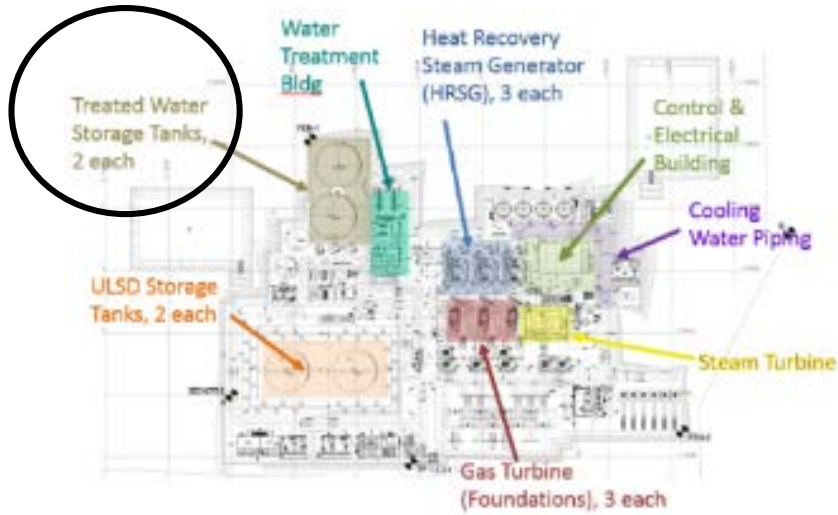


GTG Building – Commissioning work is ongoing.



# General Manager's Report

## Ukudu Power Plant Construction Status

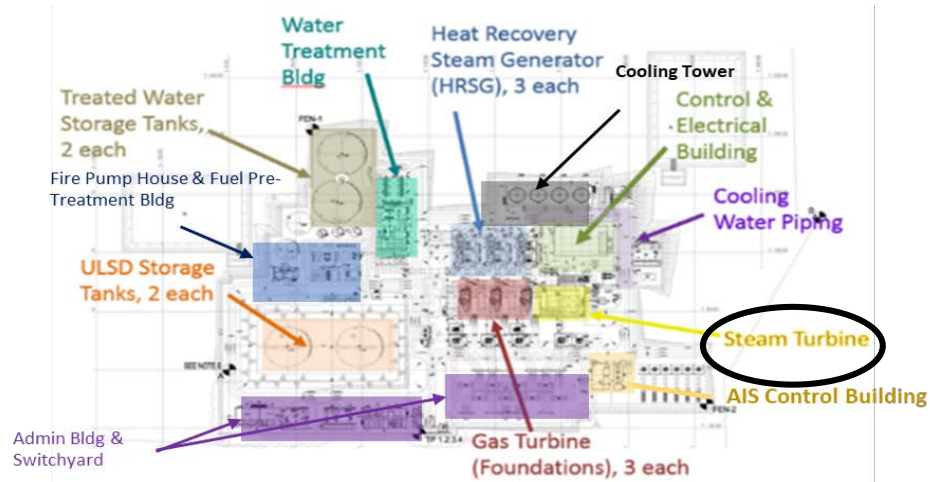


**Treated Water Storage Tanks:**  
Gravel installation is ongoing.



# General Manager's Report

## Ukudu Power Plant Construction Status



Steam blowing piping and Silencer foundation installation work is ongoing



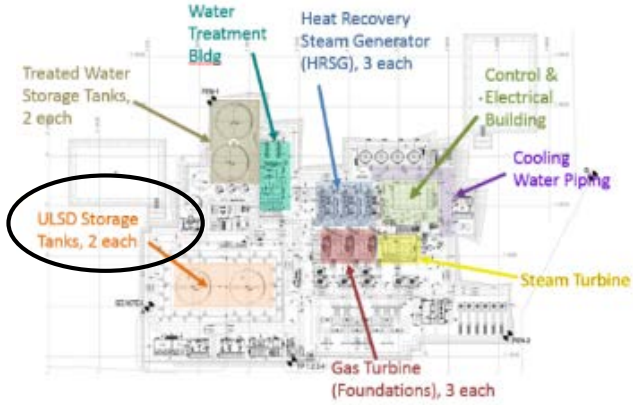
## Steam Turbine & Generator Building: Painting of STG piping and cable installation is ongoing



# General Manager's Report

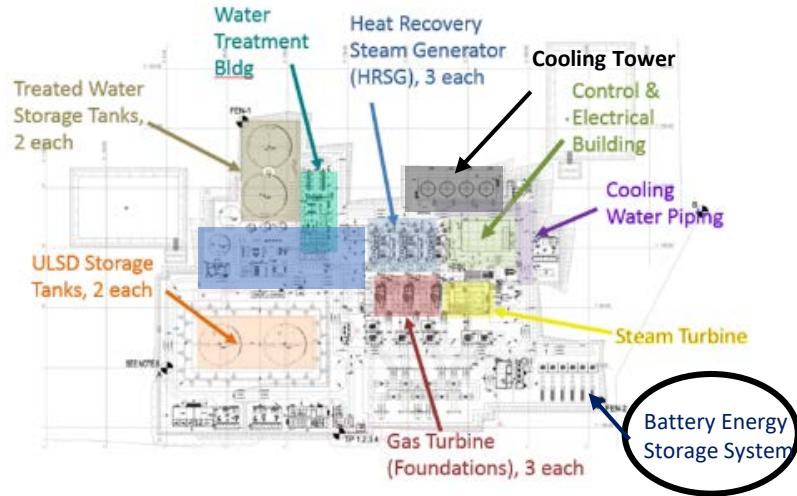
## Ukudu Power Plant Construction Status

**ULSD Storage Tanks – Completed**  
Both tanks now contain ULSD.



# General Manager's Report

## Ukudu Power Plant Construction Status



Site Acceptance Testing of battery modules is ongoing

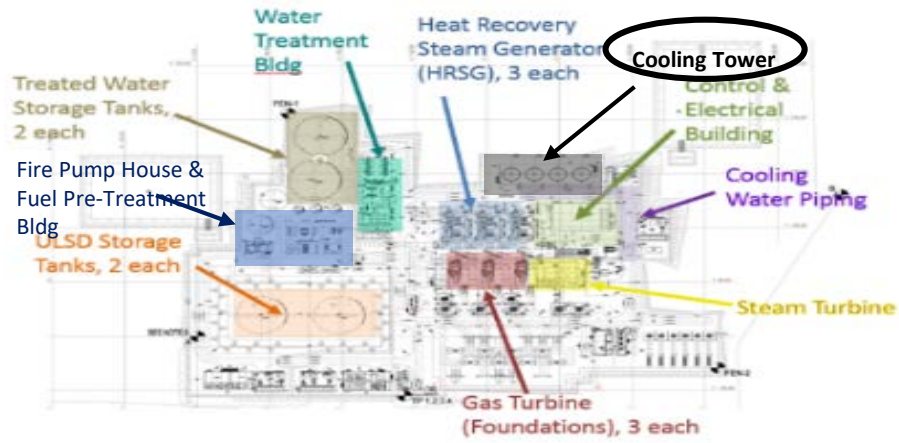


## Battery Energy Storage System (BESS): Cable pulling is ongoing.

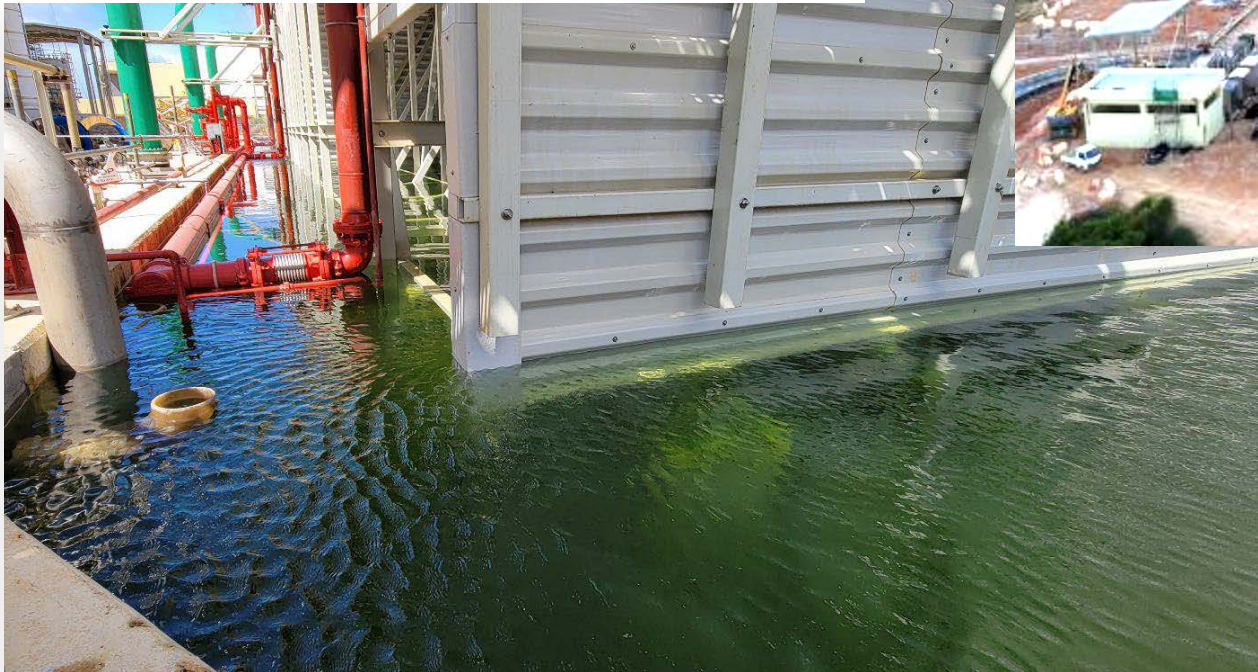


# General Manager's Report

## Ukudu Power Plant Construction Status

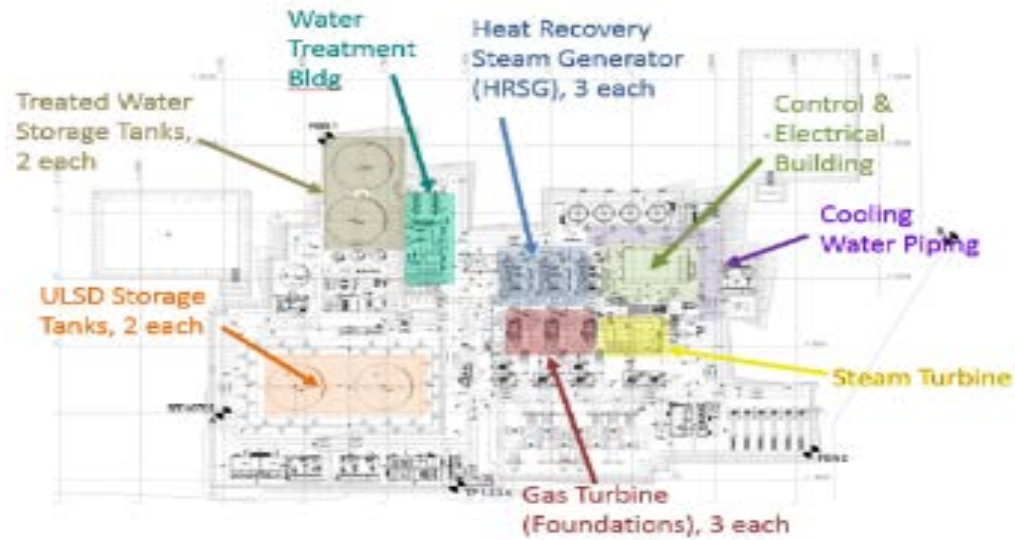


Cooling Tower & Basin – Commissioning work is ongoing.



# General Manager's Report

## Ukudu Power Plant Construction Status



Property fence installation is ongoing



## Miscellaneous Ongoing Work

Access road ground compaction and asphaltting in progress



Installation of grating over storm water ditches is ongoing



# General Manager's Report

## Fuel Pipeline Construction Status



# General Manager's Report

## Fuel Pipeline Construction Status

### All Pipeline Areas

1. First fuel transfer to Ukudu of approximately 74,000 barrels was completed on December 18<sup>th</sup>, 2024.
2. Final Punchlist items are being addressed



# Generation KPIs

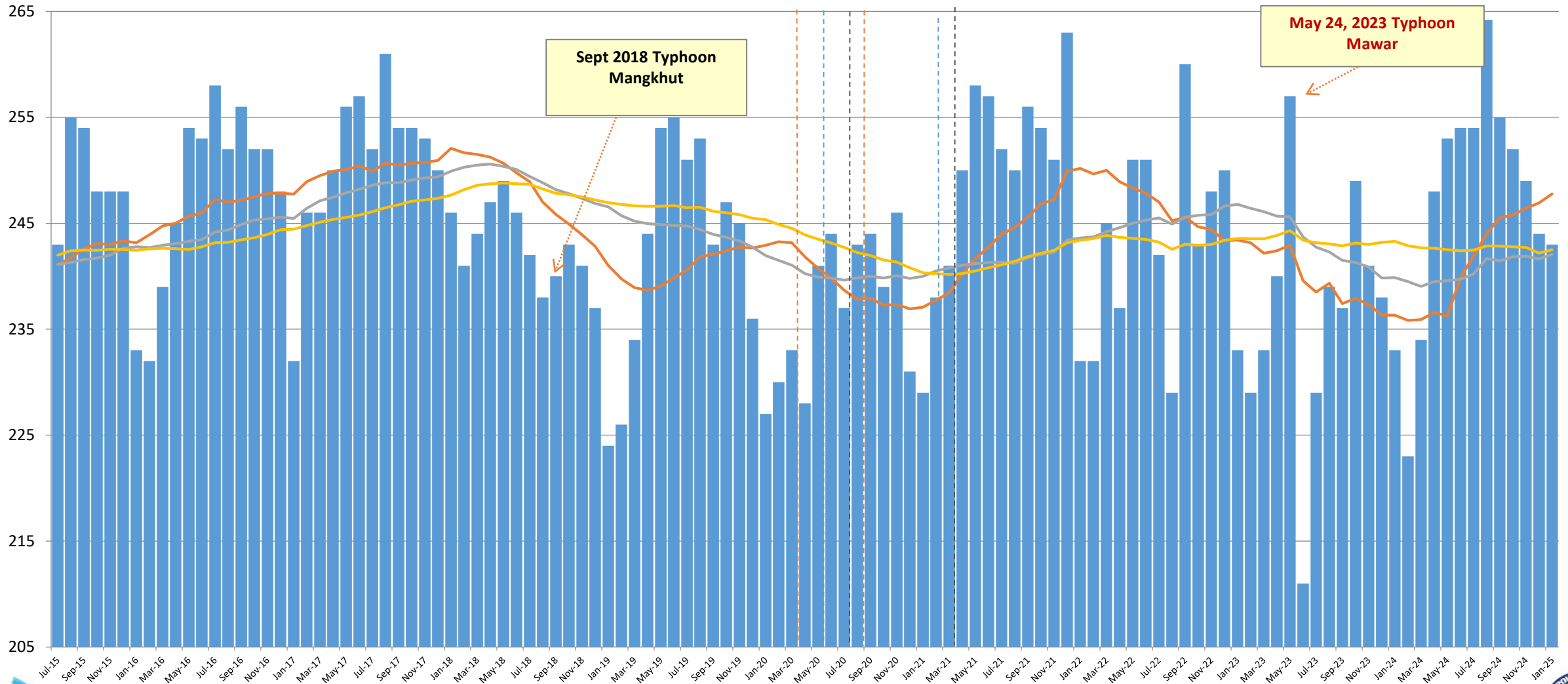
## January, 2025

# Historical Monthly Peak Demand July 2015 - January 2025

- Peak Demand
- 12-month Rolling Average
- 2-year Rolling Average
- 3-year Rolling Average

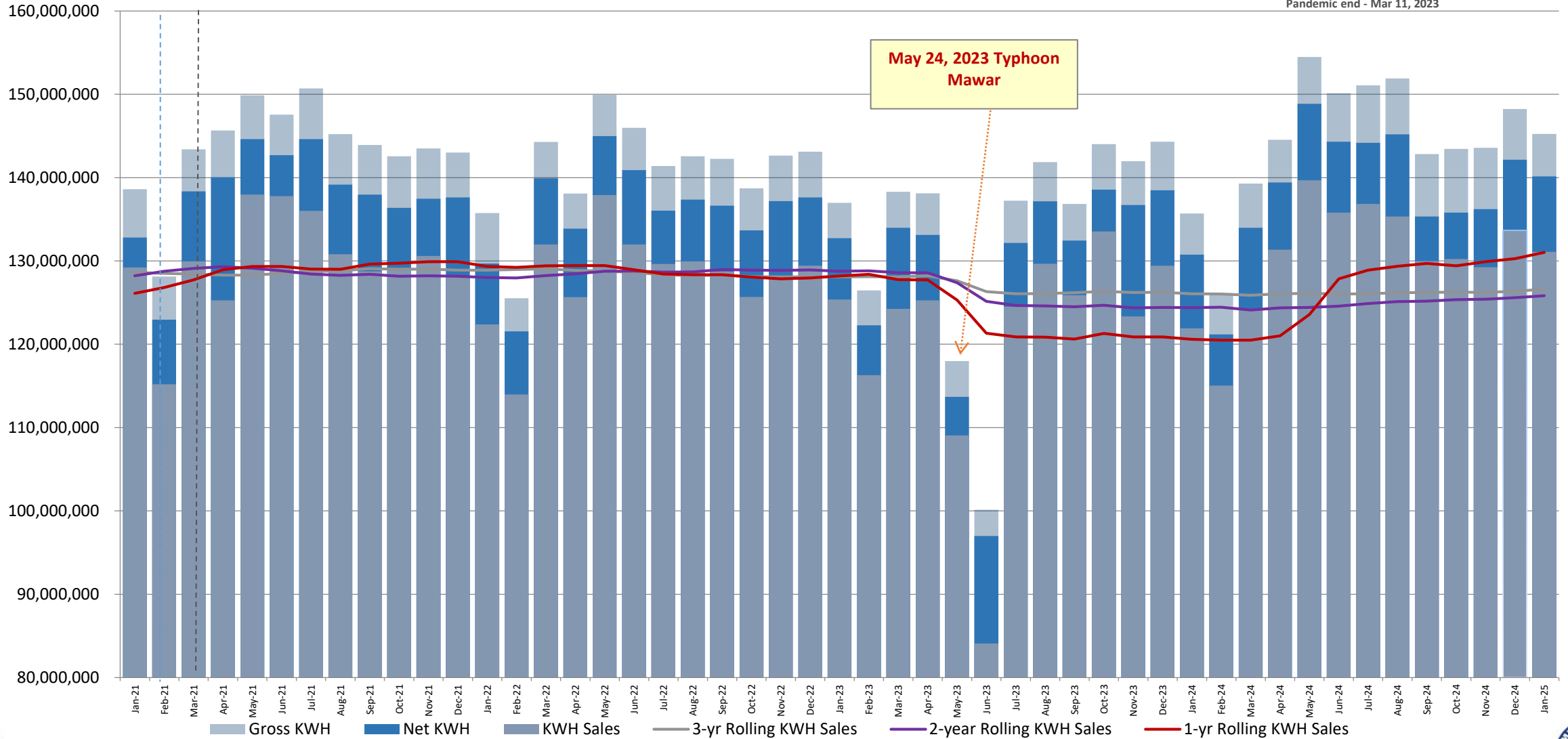
## COVID 19 Pandemic

- PCOR1 - Mar 15, 2020
- PCOR2 - May 10, 2020
- PCOR3 - Jul 20, 2020
- PCOR1 - Aug 16, 2020
- PCOR 2 - Jan 18, 2021
- PCOR3 - Feb 22, 2021
- Pandemic end - Mar 11, 2023



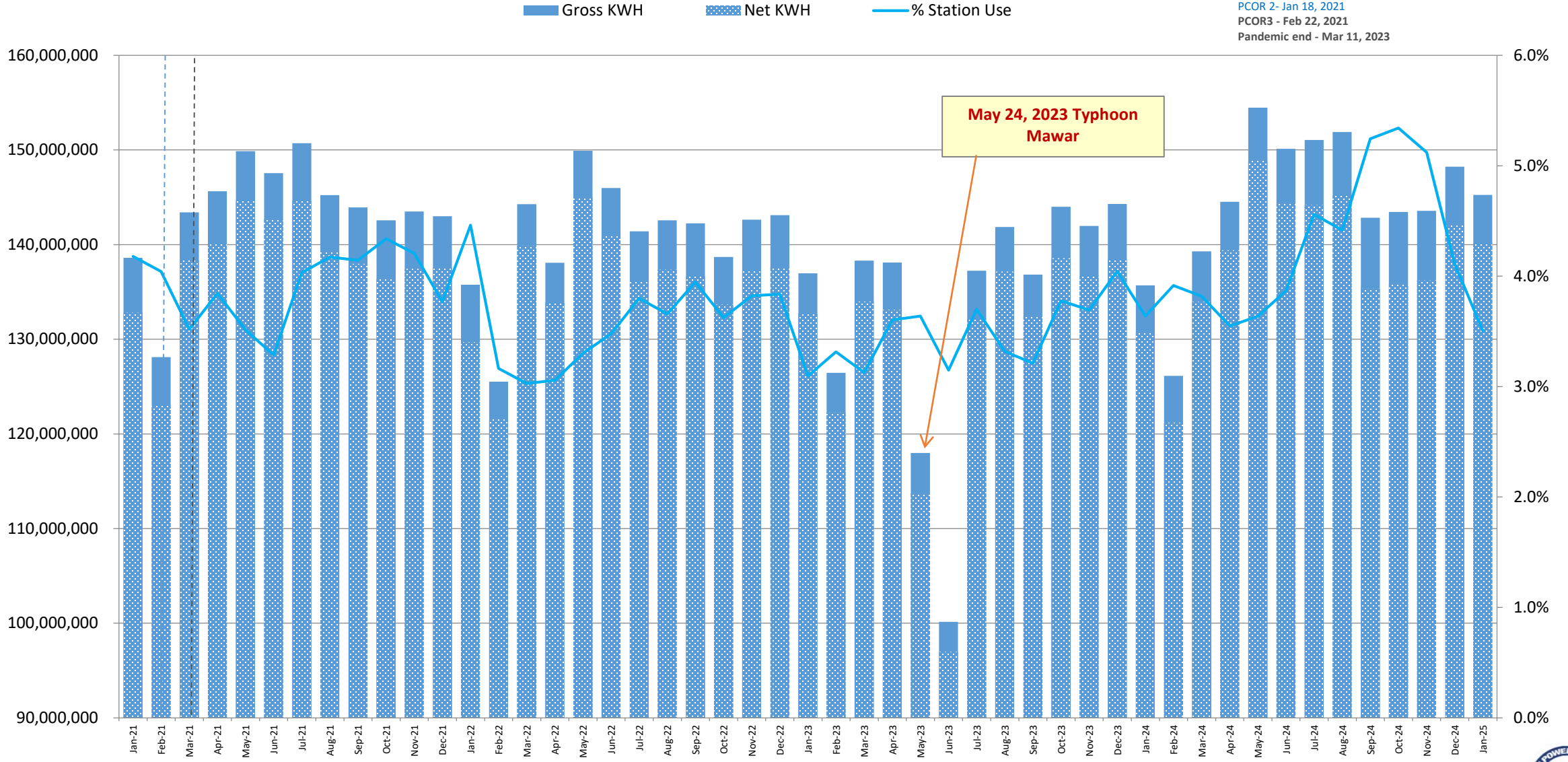
# Historical KWH Sales Jan 2021 - Jan 2025

**COVID 19 Pandemic**  
 PCOR1 - Mar 15, 2020  
 PCOR2 - May 10, 2020  
 PCOR3 - Jul 20, 2020  
 PCOR1 - Aug 16, 2020  
 PCOR 2- Jan 18, 2021  
 PCOR3 - Feb 22, 2021  
 Pandemic end - Mar 11, 2023

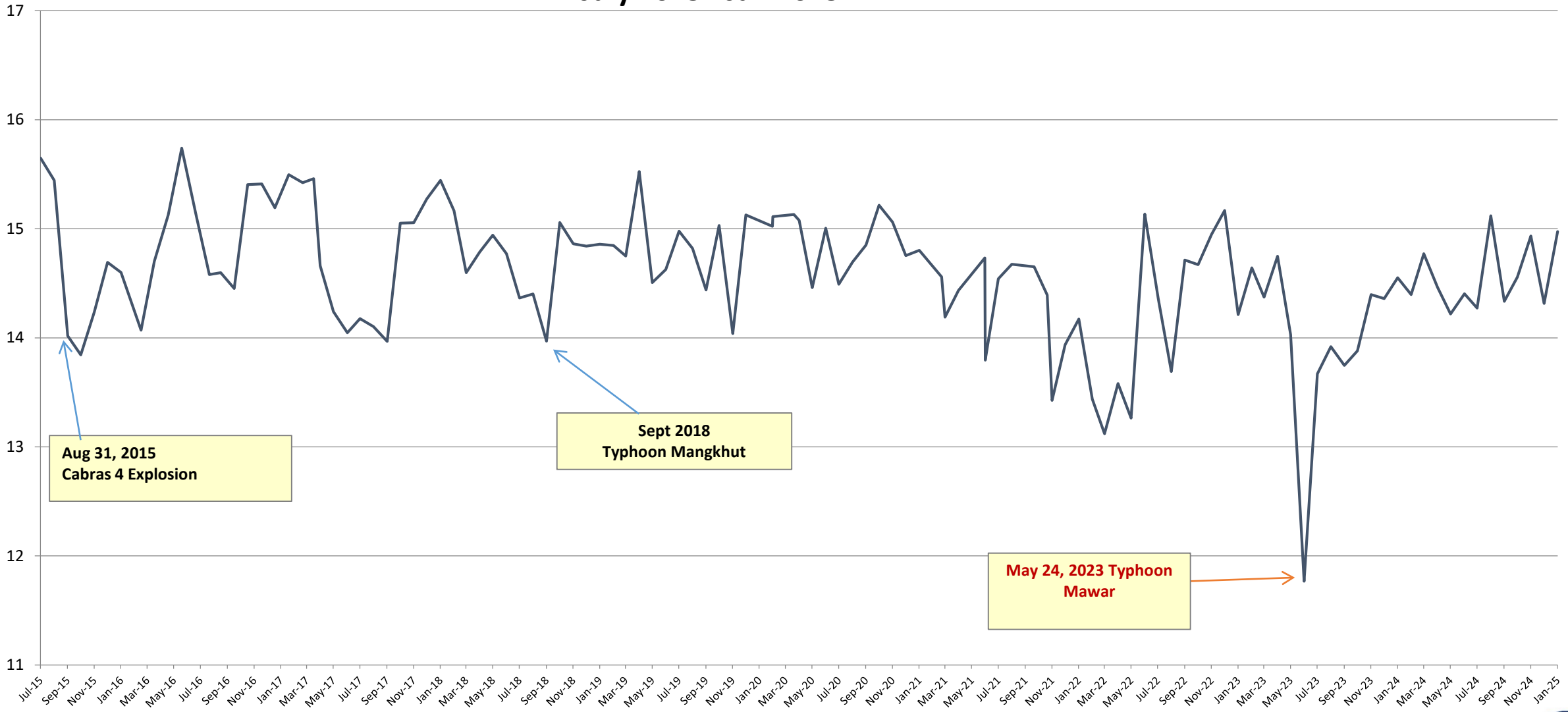


# Gross and Net Generation (KWH) Jan 2021 - Jan 2025

**COVID 19 Pandemic**  
 PCOR1 - Mar 15, 2020  
 PCOR2 - May 10, 2020  
 PCOR3 - Jul 20, 2020  
 PCOR1 - Aug 16, 2020  
 PCOR 2- Jan 18, 2021  
 PCOR3 - Feb 22, 2021  
 Pandemic end - Mar 11, 2023



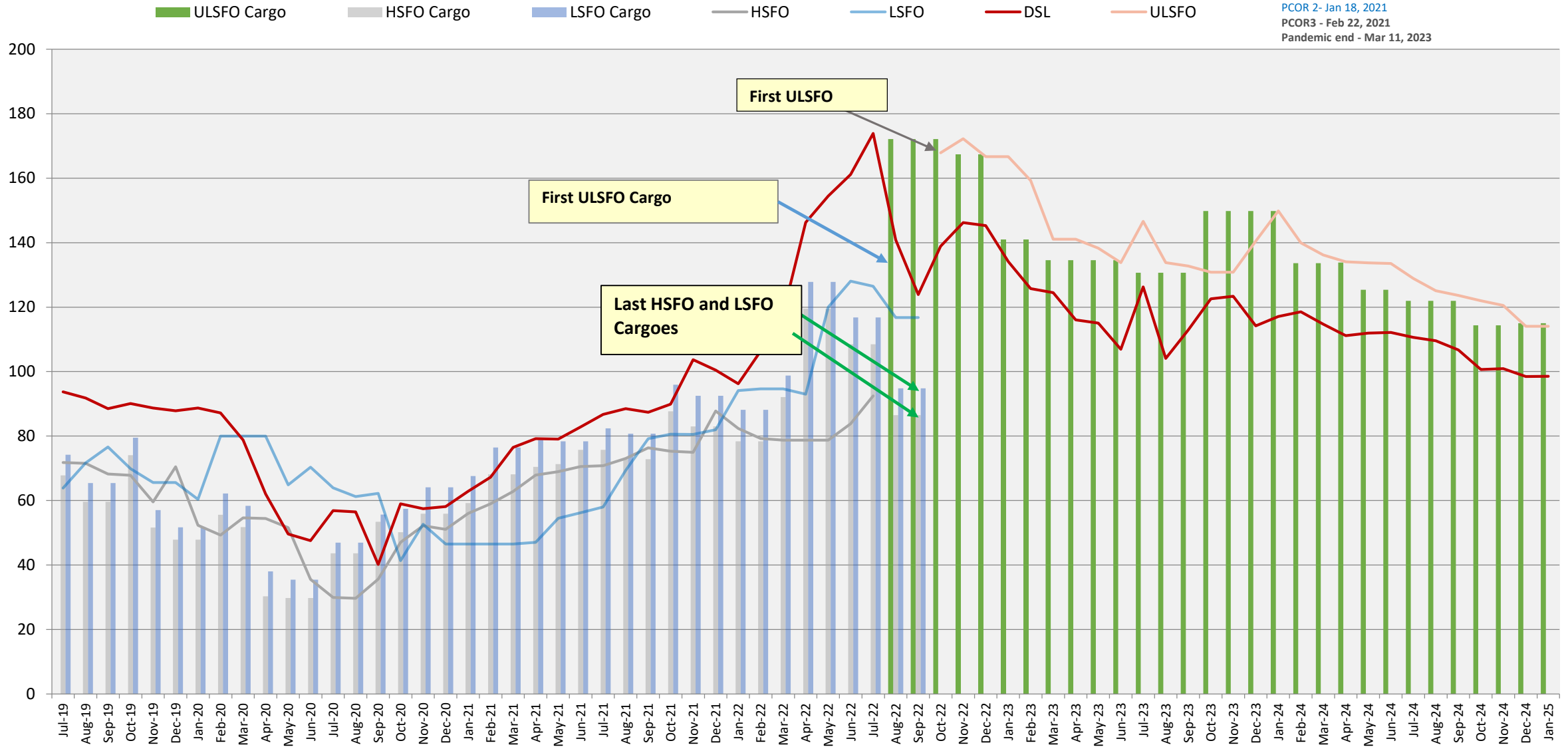
# SYSTEM GROSS HEAT RATE (KWH/Gal) July 2015 - Jan 2025



# Fuel Cargo and Fuel Consumption Costs (\$/bbl)

## June 2019 - Jan 2025

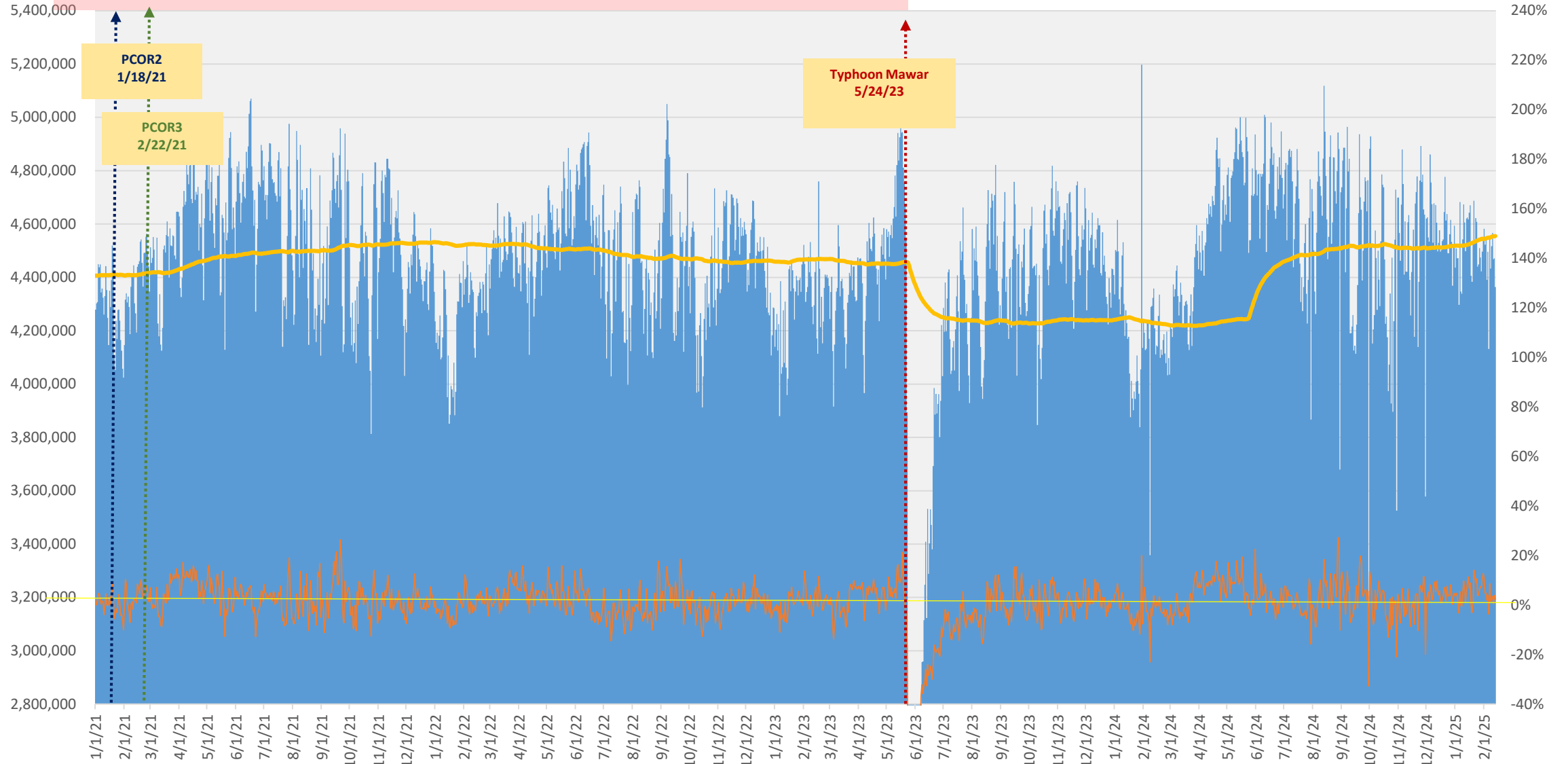
**COVID 19 Pandemic**  
 PCOR1 - Mar 15, 2020  
 PCOR2 - May 10, 2020  
 PCOR3 - Jul 20, 2020  
 PCOR1 - Aug 16, 2020  
 PCOR2 - Jan 18, 2021  
 PCOR3 - Feb 22, 2021  
 Pandemic end - Mar 11, 2023

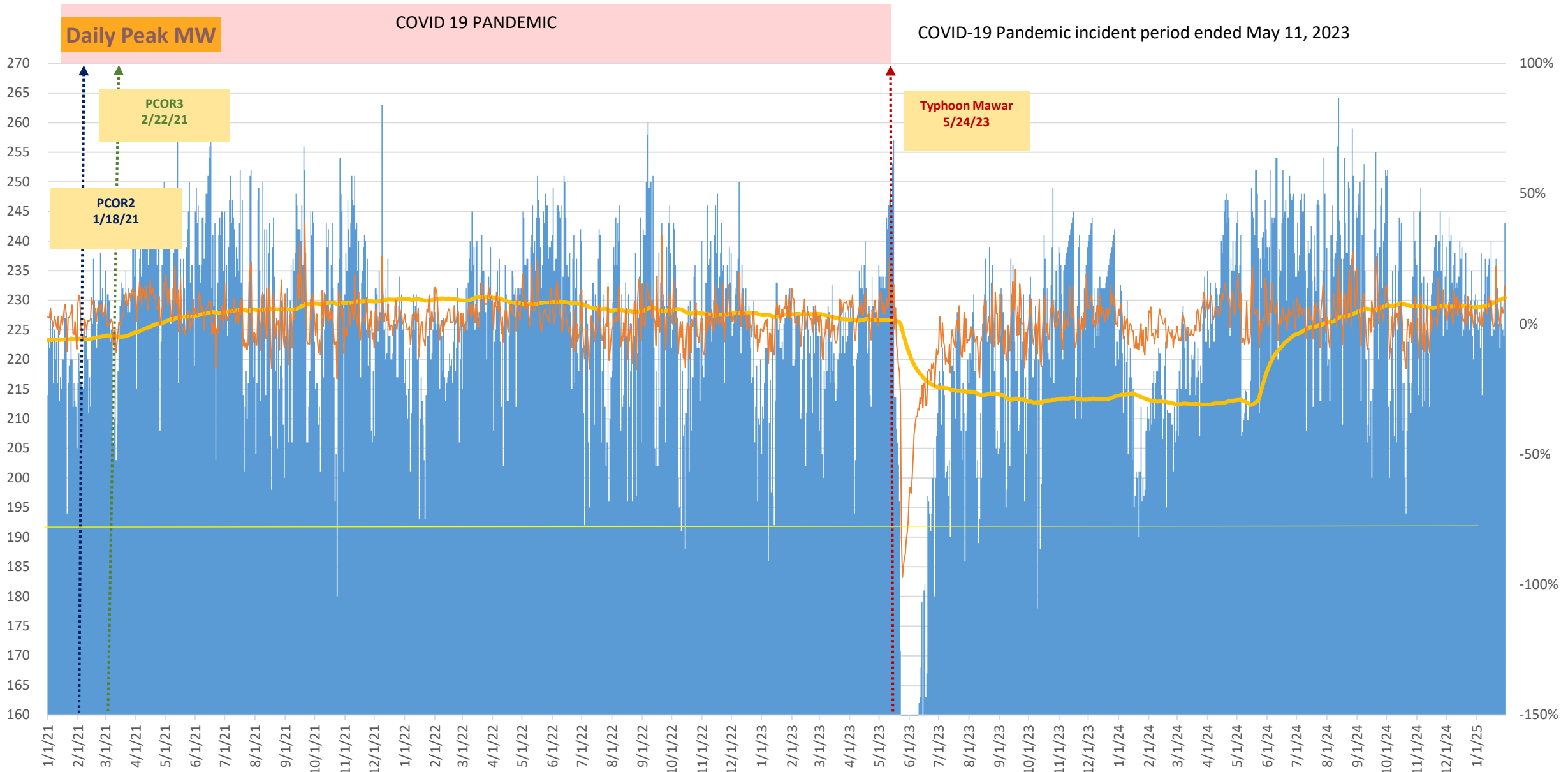


# Daily Net KWH

COVID 19 PANDEMIC

COVID-19 Pandemic incident period ended May 11, 2023





# CFO

## Financial Highlights

### January 2025

# Residential average kWh & LEAC Rate

Avg kWh	Oct	Nov	Dec	Jan	Feb	Mar	Apr	May	Jun	Jul	Aug	Sep
FY2019	957	938	940	831	761	915	951	1,028	1,048	1,025	940	896
FY2020	942	938	931	867	785	979	1,046	1,140	1,114	1,103	1,081	1,062
FY2021	1,064	1,083	1,062	1,117	939	1,094	1,046	1,186	1,215	1,114	1,032	1,038
FY2022	1,021	1,063	1,030	942	883	1,053	991	1,128	1,050	977	992	972
FY2023	928	979	956	882	818	917	946	805	661	958	960	985
FY2024	997	956	955	877	786	913	986	1,070	1,041	1,054	1,023	968
FY2025	934	952	989	947								

LEAC Rate	Oct	Nov	Dec	Jan	Feb	Mar	Apr	May	Jun	Jul	Aug	Sep
FY2019	\$0.1542	\$0.1542	\$0.1542	\$0.1542	\$0.1542	\$0.1542	\$0.1542	\$0.1542	\$0.1542	\$0.1542	\$0.1542	\$0.1542
FY2020	\$0.1542	\$0.1542	\$0.1542	\$0.1542	\$0.1345	\$0.1345	\$0.1100	\$0.1100	\$0.0868	\$0.0868	\$0.0868	\$0.0868
FY2021	\$0.0868	\$0.0868	\$0.0868	\$0.0868	\$0.1100	\$0.1100	\$0.1100	\$0.1100	\$0.1100	\$0.1100	\$0.1304	\$0.1304
FY2022	\$0.1508	\$0.1508	\$0.1715	\$0.1715	\$0.1808	\$0.1808	\$0.2095	\$0.2095	\$0.2095	\$0.2516	\$0.2516	\$0.2960
FY2023	\$0.2960	\$0.3186	\$0.3186	\$0.3186	\$0.3186	\$0.3186	\$0.3186	\$0.3186	\$0.2311	\$0.2311	\$0.2311	\$0.2311
FY2024	\$0.2311	\$0.2311	\$0.2311	\$0.2311	\$0.2620	\$0.2620	\$0.2620	\$0.2620	\$0.2620	\$0.2620	\$0.2620	\$0.2620
FY2025	\$0.2620	\$0.2620	\$0.2620	\$0.2620								

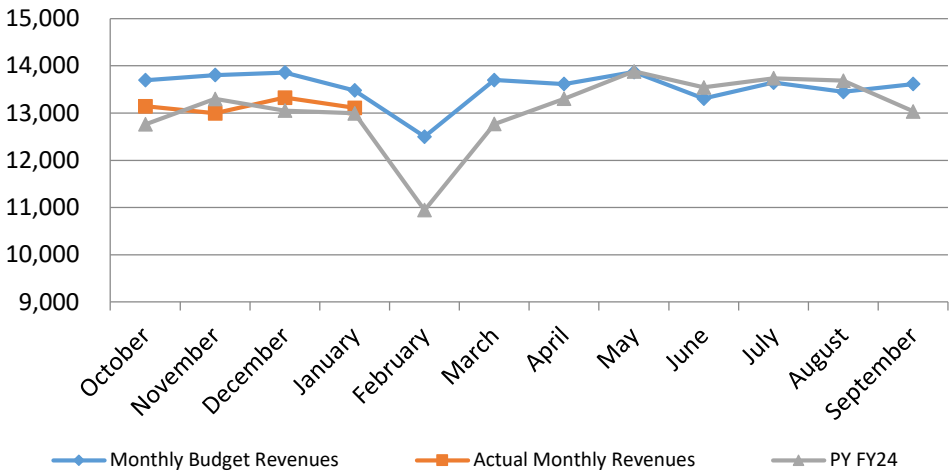
# Hotel kWh & Occupancy Rate

MWh Hotels	Oct	Nov	Dec	Jan	Feb	Mar	Apr	May	Jun	Jul	Aug	Sep
FY2019	11,009	10,812	10,665	10,372	9,151	9,625	10,743	10,945	10,278	11,670	10,356	10,569
FY2020	10,510	9,983	10,691	10,053	9,831	8,494	7,195	6,983	7,463	7,798	7,678	7,220
FY2021	7,194	7,535	7,754	7,129	6,427	7,014	7,474	7,293	7,669	7,989	8,064	7,712
FY2022	7,119	7,495	7,184	7,055	6,563	7,083	6,988	7,652	7,883	8,097	8,202	7,953
FY2023	7,926	8,048	8,385	8,164	7,669	8,075	7,985	7,300	6,225	8,692	8,758	8,133
FY2024	8,422	8,467	8,533	8,278	7,538	8,163	8,370	8,726	8,802	8,976	8,731	8,188
FY2025	8,525	8,596	8,916	8,645								

Occupancy	Oct	Nov	Dec	Jan	Feb	Mar	Apr	May	Jun	Jul	Aug	Sep
FY2019	85.9	85.9	85.9	91.4	91.4	91.4	84.8	84.8	84.8	92.0	92.0	92.0
FY2020	89.9	89.9	89.9	73.7	73.7	73.7	34.7	34.7	34.7	27.1	27.1	27.1
FY2021	38.7	38.7	38.7	51.4	51.4	51.4	41.3	41.3	41.3	52.4	52.4	52.4
FY2022	45.9	45.9	45.9	56.0	56.0	56.0	54.0	54.0	54.0	66.8	66.8	66.8
FY2023	59.7	59.7	59.7	67.4	67.4	67.4	60.0	60.0	60.0	73.4	73.4	73.4
FY2024	62.3	62.3	62.3	62.3	62.3	62.3	72.3	72.3	72.3			

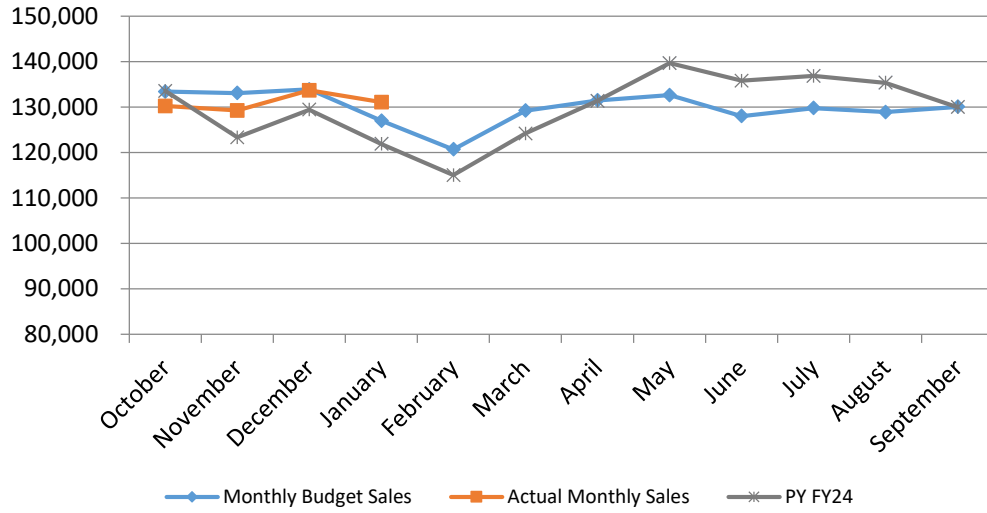
# January 2025 Monthly Financial Highlights

## Base Rate Revenue (in '000)



Through January 31, 2025							
	Monthly Budget	Actual Monthly				CY vs PY	
	\$000	Revenues	Revenues	Variance		PY FY24	Variance
October	13,696	\$ 13,145	\$ (551)	↓	\$ 12,763	\$ 382	↑
November	13,804	12,996	(808)	↓	13,301	(305)	↓
December	13,858	13,328	(530)	↓	13,053	275	↑
January	13,478	13,109	(369)	↓	12,995	114	↑
February	12,499				10,947		
March	13,700				12,770		
April	13,614				13,303		
May	13,867				13,882		
June	13,307				13,544		
July	13,645				13,735		
August	13,449				13,685		
September	13,616				13,037		
<b>Total</b>	<b>\$ 162,534</b>	<b>\$ 52,577</b>	<b>\$ (2,259)</b>		<b>\$ 157,016</b>	<b>\$ 464</b>	

## MWH Sales (in MWh)

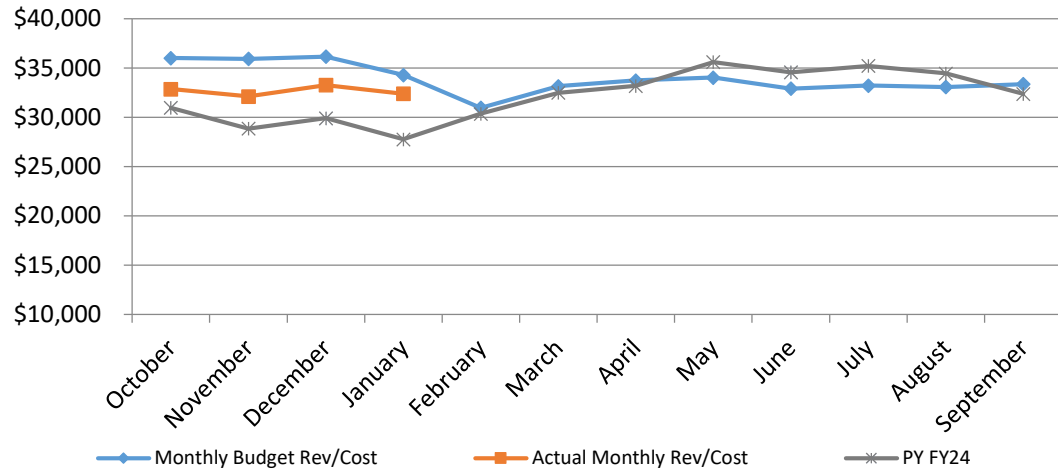


Through January 31, 2025							
	Monthly	Actual Monthly				CY vs PY	
	mwh	Budget Sales	Sales	Variance		PY FY24	Variance
October	133,391	130,233	(3,158)	↓	133,530	(3,296)	↓
November	133,087	129,256	(3,832)	↓	123,349	5,906	↑
December	133,903	133,670	(234)	↓	129,415	4,255	↑
January	126,987	131,091	4,104	↑	121,911	9,180	↑
February	120,684				115,030		
March	129,205				124,174		
April	131,485				131,353		
May	132,646				139,665		
June	128,028				135,787		
July	129,768				136,838		
August	128,906				135,325		
September	130,051				129,974		
<b>Total</b>	<b>1,558,142</b>	<b>524,249</b>	<b>(3,119)</b>		<b>1,556,351</b>	<b>16,044</b>	

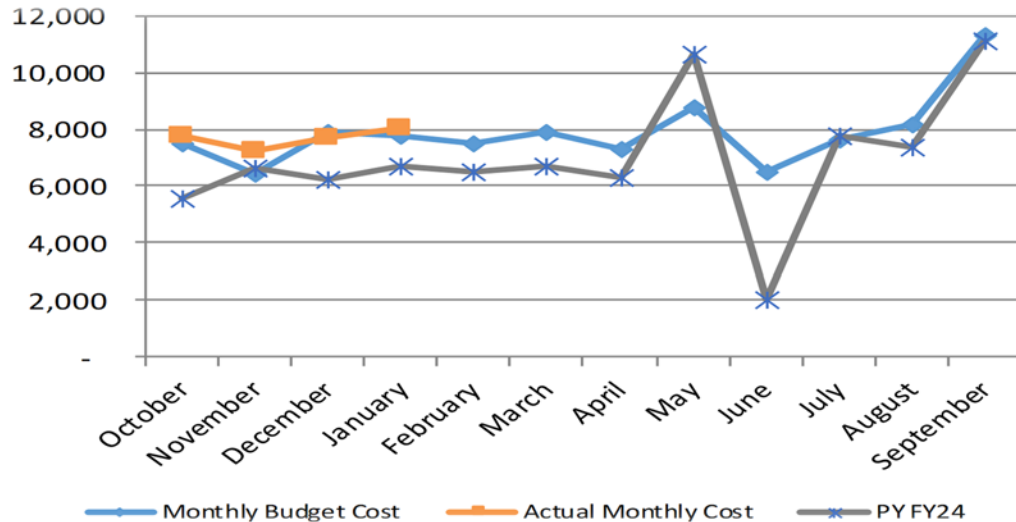


# January 2025 Monthly Financial Highlights (Continued)

## Fuel Revenues (in '000)



## O&M Costs (in '000)



## Through January 31, 2025

	Monthly Budget \$000	Actual Monthly Rev/Cost	Variance		PY FY24	CY vs PY Variance	
October	\$ 36,016	\$ 32,867	(3,149)	↓	\$ 30,964	1,903	↑
November	35,934	32,112	(3,822)	↓	28,862	3,250	↑
December	36,154	33,265	(2,889)	↓	29,905	3,361	↑
January	34,287	32,389	(1,897)	↓	27,762	4,627	↑
February	30,966				30,366		
March	33,153				32,485		
April	33,738				33,184		
May	34,036				35,601		
June	32,920				34,575		
July	33,228				35,225		
August	33,076				34,460		
September	33,370				32,374		
<b>Total</b>	<b>\$ 406,877</b>	<b>\$ 130,633</b>	<b>\$ (11,756)</b>		<b>\$ 385,762</b>	<b>\$ 13,142</b>	

## Through January 31, 2025

	Monthly Budget \$000	Actual Monthly Cost	Variance		PY FY24	CY vs PY Variance	
October	7,529	7,742	(213)	↓	5,576	(2,166)	↓
November	6,440	7,241	(801)	↓	6,647	(594)	↓
December	7,931	7,727	204	↑	6,262	(1,465)	↓
January	7,769	8,057	(289)	↓	6,731	(1,326)	↓
February	7,516		7,516		6,488		
March	7,871		7,871		6,690		
April	7,277		7,277		6,310		
May	8,781		8,781		10,634		
June	6,514		6,514		2,008		
July	7,664		7,664		7,755		
August	8,174		8,174		7,361		
September	11,292		11,292		11,110		
<b>Total</b>	<b>\$ 94,758</b>	<b>\$ 30,767</b>	<b>\$ 63,991</b>		<b>\$ 83,572</b>	<b>\$ (5,550)</b>	



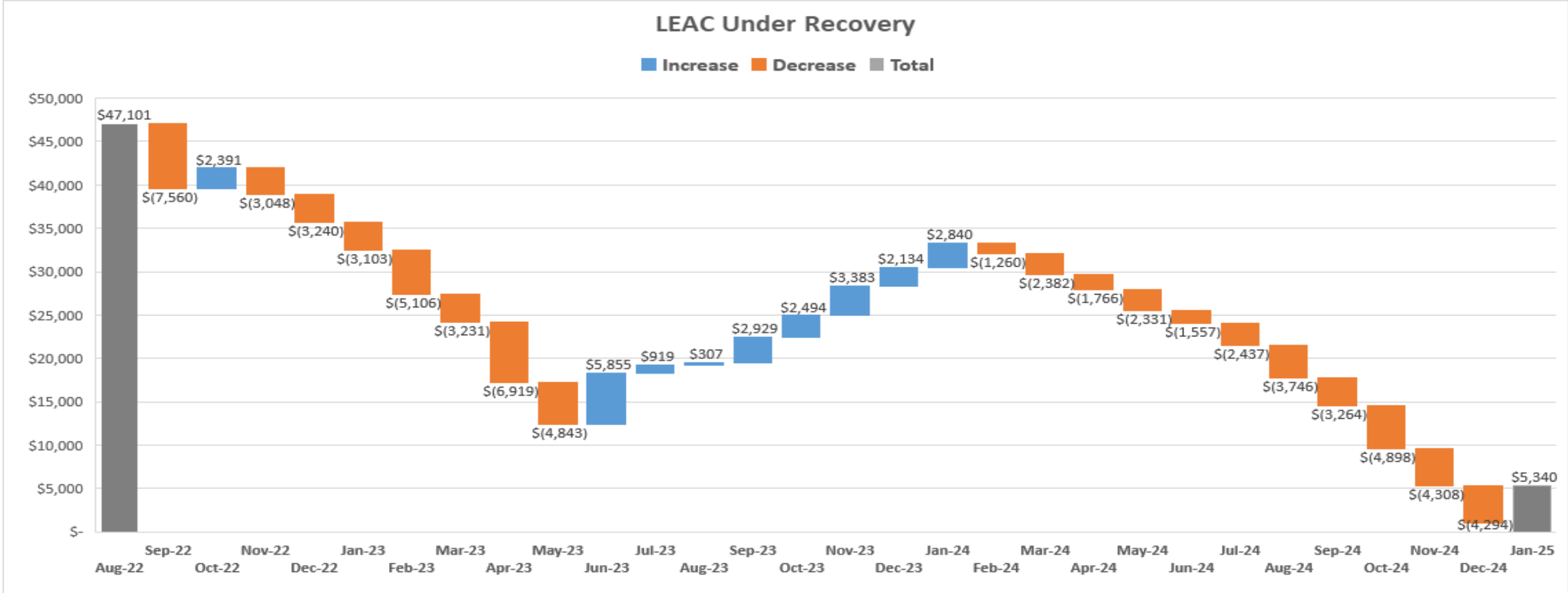
# January 2025 Monthly Financial Highlights (Continued)

Through January 31, 2025

	2Q2022	3Q2022	4Q2022	1Q2023	2Q2023	3Q2023	4Q2023	1Q2024	2Q2024	3Q2024	4Q2024	1Q2025	2Q2025
Residential	45,283	45,261	45,315	45,370	45,417	45,453	44,968	45,642	45,759	45,879	45,953	45,924	45,933
Commercial	5,367	5,368	5,373	5,425	5,473	5,436	5,421	5,447	5,476	5,522	5,547	5,558	5,596
Government	1,077	1,079	1,087	1,088	1,108	1,112	1,106	1,105	1,102	1,109	1,120	1,136	1,128
Streetlights	1,158	1,156	1,163	1,167	1,167	1,165	1,159	1,149	1,145	1,144	1,135	1,126	1,121
Navy	1	1	1	1	1	1	1	1	1	1	1	1	1
<b>Total</b>	<b>52,886</b>	<b>52,865</b>	<b>52,939</b>	<b>53,051</b>	<b>53,166</b>	<b>53,167</b>	<b>52,655</b>	<b>53,344</b>	<b>53,483</b>	<b>53,655</b>	<b>53,756</b>	<b>53,745</b>	<b>53,779</b>

Debt service coverage (DSC) calculation-indenture	2019	2020	2021	2022	2023	2024	2025
Senior lien coverage	1.78	1.42	1.54	1.71	1.29	1.69	1.38
Debt service coverage (DSC) calculation-IPP as O&M							
Senior lien coverage	1.46	1.23	1.49	1.71	1.29	1.69	1.38

# January 2025 Monthly Financial Highlights (Continued)



Through January 31, 2025					
	\$000	LEAC Revenue	Fuel Cost	(Over)/Under Recover	Under Recovery Balance
October	\$	32,867	\$ 27,969	\$ (4,898)	\$ 9,661
November	\$	32,112	\$ 27,804	\$ (4,308)	\$ 5,353
December	\$	33,265	\$ 27,968	\$ (5,297)	\$ 56
January	\$	32,389	\$ 26,993	(5,396)	\$ (5,340)



# January 2025 Credit Summary

## *Investment Grade Rating*

	<b>S&amp;P Global</b>	<b>MOODY'S</b>	<b>FitchRatings</b>
<b>Rating</b>	<b>BBB</b>	<b>Baa2</b>	<b>BBB</b>
<b>Long-Term Outlook</b>	<b>Stable</b>	<b>Stable</b>	<b>Stable</b>

# ISSUES FOR DECISION

# GPA Resolution FY2025-09

## Relative to Grant-Funded, New Medical Campus Line Extension and Related Power Infrastructure

### **What is the project's objective? Is it necessary and urgent?**

GPA will contract for the construction of an electrical substation and underground power lines to service the new Mangilao Medical Campus (MMC), as well as the surrounding community. This electrical infrastructure project is necessary to address the anticipated needs of the new medical complex, as well as the growing needs of GPA's customers in the Mangilao area. Since by law project funds must be spent by December 31, 2026, time is of the essence.

### **Where is the location?**

The electrical infrastructure project will be built on a 2-acre parcel of land, part of a larger property purchased by the Guam Housing and Urban Renewal Authority (GHURA) and now owned by the government of Guam. The 2-acre lot will be transferred in fee simple to GPA after GHURA re-zones the entire property for public facilities use.

### **How much will it cost?**

A total of \$35,448,983.87 is available for expenditures incurred to December 31, 2026. Because this sum is obligated for this project only and the Governor has no other eligible projects, it cannot be reprogrammed to another project. GPA has a rare opportunity here to use federal grant monies to build a much-needed substation with underground transmission lines that will benefit not only the new medical complex but also other stakeholders in the area, including educational facilities, businesses, and homes.

### **When will it be completed?**

GPA anticipates the project will be completed by December 31, 2026.

### **What is its funding source?**

Guam Economic Development Authority (GEDA), as subgrantor, will direct Coronavirus State and Local Fiscal Recovery Funds (SLFRF) to GPA, as subgrantee, through a subgrant agreement of grant monies awarded to Guam through the American Rescue Plan Act (ARPA) in 2022.

### **The IFB/BID responses:**

GPA expects to issue two or three solicitations to complete the various components of the project. The first invitation for bids, for design and construction of the new Mangilao substation, has been prepared. The preparation of further solicitation(s) for other necessary work is underway.

# GPA Resolution FY2025-11

Relative to Authorizing the Management of the Guam Power Authority to File a Ratepayer's Bill of Rights Notice in Anticipation of the Filing of a Petition for a Base Rate Adjustment with the Public Utilities

## **What is the project's objective?**

Public Law 26-23, which was known as the Ratepayer's Bill of Rights, requires, among other things, that a notice must be placed in a newspaper of general circulation at least three (3) months before an anticipated petition or a Base Rate increase, which describes the rates for which the Authority is petitioning.

Public Law 26-23 also requires the Authority to mail a notice to every ratepayer for at least one (1) month before submitting the proposed rate increase to the Public Utilities Commission.

## **Is it necessary and urgent?**

The new 198 combined cycle power plant (Ukudu Power Plant) is scheduled to be commissioned in September 2025. The base rate adjustment is necessary to cover the costs of the Ukudu Power Plant. The plant is 37% more fuel efficient than Cabras 1 and 2 and 22% more efficient than Piti 8 and 9. This efficiency will help import 930,000 fewer barrels of fuel per annum or 39 million gallons. The fuel efficiency will offset the base rate adjustment and provide net savings to the ratepayers.

# GPA Resolution FY2025-11

## Appendix A

### BILL ILLUSTRATION RATE SCHEDULE R - RESIDENTIAL

	RATE SCHEDULE R		LEAC at \$94.24 per barrel		LEAC at \$100 per barrel			
	Prior Rate		Current		Proposed			
	Eff 08-01-24		Eff 02-01-25		Eff 09-01-2025			
KWH		<b>500</b>		500		500		
Monthly Charge	\$ 15.00	\$ 15.00	\$ 15.00	\$ 15.00	\$ 20.00	\$ 20.00	\$ 5.00	33.3%
Non-Fuel Energy Charge								
First 500 KWH	0.06955	34.78	0.06955	34.78	0.09239	46.20	0.02284	32.8%
Over 500 KWH	0.08687	-	0.08687	-	0.11540	-	0.02853	32.8%
Emergency Water-well charge	0.00279	-	0.00279	-	0.00279	-	-	0.0%
Self-Insurance Charge	0.00290	1.45	0.00290	1.45	0.00290	1.45	-	0.0%
Working Capital Fund Surcharge	0.00000	-	0.00000	-	0.00000	-	-	
Total Electric Charge before Fuel Recovery Charges		51.23		51.23		67.65		
Fuel Recovery Charge (LEAC)	<b>0.261995</b>	131.00	<b>0.208802</b>	104.40	<b>0.135840</b>	67.92	\$(0.072962)	-34.9%
Total Electric Charge		<u>\$182.22</u>		<u>\$ 155.63</u>		<u>\$ 135.57</u>		
Increase/(Decrease) in Total Bill		-		<u>\$(26.60)</u>		<u>\$(20.06)</u>		
% Increase/(Decrease) in Total Bill		-		<b>-14.60%</b>		<b>-12.89%</b>		
% Increase/(Decrease) in LEAC rate		-		<b>-20.30%</b>		<b>-34.94%</b>		

Note:

- The proposed LEAC rate may increase or decrease depending on the market price of fuel. The estimated LEAC is based on \$100 per barrel fuel cost.



# GPA Resolution FY2025-11

## Appendix A

### BILL ILLUSTRATION RATE SCHEDULE R - RESIDENTIAL

	RATE SCHEDULE R							
	Prior Rate		Current		Proposed			
	Eff 08-01-24		Eff 02-01-25		Eff 09-01-2025			
KWH		<b>1,000</b>		1,000		1,000		
Monthly Charge	\$ 15.00	\$ 15.00	\$ 15.00	\$ 15.00	\$ 20.00	\$ 20.00	\$ 5.00	33.3%
Non-Fuel Energy Charge								
First 500 KWH	0.06955	34.78	0.06955	34.78	0.09239	46.20	0.02284	32.8%
Over 500 KWH	0.08687	43.44	0.08687	43.44	0.11540	57.70	0.02853	32.8%
Emergency Water-well charge	0.00279	1.40	0.00279	1.40	0.00279	1.40	-	0.0%
Self-Insurance Charge	0.00290	2.90	0.00290	2.90	0.00290	2.90	-	0.0%
Working Capital Fund Surcharge	0.00000	-	0.00000	-	0.00000	-		
Total Electric Charge before Fuel Recovery Charges		97.52		97.52		128.19		
Fuel Recovery Charge (LEAC)	<b>0.261995</b>	262.00	<b>0.208802</b>	208.80	<b>0.135840</b>	135.84	\$(0.072962)	-34.9%
Total Electric Charge		<u>\$359.52</u>		<u>\$ 306.32</u>		<u>\$ 264.03</u>		
Increase/(Decrease) in Total Bill				<u>\$ (53.19)</u>		<u>\$ (42.29)</u>		
% Increase/(Decrease) in Total Bill				<b>-14.80%</b>		<b>-13.81%</b>		
% Increase/(Decrease) in LEAC rate				<b>-20.30%</b>		<b>-34.94%</b>		

Note:

- The proposed LEAC rate may increase or decrease depending on the market price of fuel. The estimated LEAC is based on \$100 per barrel fuel cost.



# GPA Resolution FY2025-11

## Appendix A

### BILL ILLUSTRATION RATE SCHEDULE R - RESIDENTIAL

	RATE SCHEDULE R							
	Prior Rate Eff 08-01-24		Current Eff 02-01-25		Proposed Eff 09-01-2025			
KWH		1,500		1,500		1,500		
Monthly Charge	\$ 15.00	\$ 15.00	\$ 15.00	\$ 15.00	\$ 20.00	\$ 20.00	\$ 5.00	33.3%
Non-Fuel Energy Charge								
First 500 KWH	0.06955	34.78	0.06955	34.78	0.09239	46.20	0.02284	32.8%
Over 500 KWH	0.08687	86.87	0.08687	86.87	0.11540	115.40	0.02853	32.8%
Emergency Water-well charge	0.00279	2.79	0.00279	2.79	0.00279	2.79	-	0.0%
Self-Insurance Charge	0.00290	4.35	0.00290	4.35	0.00290	4.35	-	0.0%
Working Capital Fund Surcharge	0.00000	-	0.00000	-	0.00000	-		
Total Electric Charge before Fuel Recovery Charges		143.79		143.79		188.74		
Fuel Recovery Charge (LEAC)	<b>0.261995</b>	392.99	<b>0.208802</b>	313.20	<b>0.135840</b>	203.76	\$(0.072962)	(0.3494)
Total Electric Charge		<u>\$536.78</u>		<u>\$ 456.99</u>		<u>\$ 392.50</u>		
Increase/(Decrease) in Total Bill				\$ (79.79)		\$ (64.49)		
% Increase/(Decrease) in Total Bill				-14.86%		-14.11%		
% Increase/(Decrease) in LEAC rate				-20.30%		-34.94%		

Note:

- The proposed LEAC rate may increase or decrease depending on the market price of fuel. The estimated LEAC is based on \$100 per barrel fuel cost.



# GPA Resolution FY2025-11

## Appendix A

### BILL ILLUSTRATION RATE SCHEDULE R - RESIDENTIAL

	RATE SCHEDULE R							
	Prior Rate		Current		Proposed			
	Eff 08-01-24		Eff 02-01-25		Eff 09-01-2025			
KWH		<b>2,000</b>		2,000		2,000		
Monthly Charge	\$ 15.00	\$ 15.00	\$ 15.00	\$ 15.00	\$ 20.00	\$ 20.00	\$ 5.00	33.3%
Non-Fuel Energy Charge								
First 500 KWH	0.06955	34.78	0.06955	34.78	0.09239	46.20	0.02284	32.8%
Over 500 KWH	0.08687	130.31	0.08687	130.31	0.11540	173.10	0.02853	32.8%
Emergency Water-well charge	0.00279	4.19	0.00279	4.19	0.00279	4.19	-	0.0%
Self-Insurance Charge	0.00290	5.80	0.00290	5.80	0.00290	5.80	-	0.0%
Working Capital Fund Surcharge	0.00000	-	0.00000	-	0.00000	-		
Total Electric Charge before Fuel Recovery Charges		190.07		190.07		249.29		
Fuel Recovery Charge (LEAC)	<b>0.261995</b>	523.99	<b>0.208802</b>	417.60	<b>0.135840</b>	271.68	\$(0.072962)	-34.9%
Total Electric Charge		<u>\$714.06</u>		<u>\$ 607.67</u>		<u>\$ 520.97</u>		
Increase/(Decrease) in Total Bill				<u>\$ (106.39)</u>		<u>\$ (86.70)</u>		
% Increase/(Decrease) in Total Bill				<b>-14.90%</b>		<b>-14.27%</b>		
% Increase/(Decrease) in LEAC rate				<b>-20.30%</b>		<b>-34.94%</b>		

Note:

- The proposed LEAC rate may increase or decrease depending on the market price of fuel. The estimated LEAC is based on \$100 per barrel fuel cost.



# GPA Resolution FY2025-11

## Appendix A

### BILL ILLUSTRATION RATE SCHEDULE R - RESIDENTIAL

	RATE SCHEDULE R							
	Prior Rate		Current		Proposed			
	Eff 08-01-24		Eff 02-01-25		Eff 09-01-2025			
KWH		<b>2,500</b>		2,500		2,500		
Monthly Charge	\$ 15.00	\$ 15.00	\$ 15.00	\$ 15.00	\$ 20.00	\$ 20.00	\$ 5.00	33.3%
Non-Fuel Energy Charge								
First 500 KWH	0.06955	34.78	0.06955	34.78	0.09239	46.20	0.02284	32.8%
Over 500 KWH	0.08687	173.74	0.08687	173.74	0.11540	230.81	0.02853	32.8%
Emergency Water-well charge	0.00279	5.58	0.00279	5.58	0.00279	5.58	-	0.0%
Self-Insurance Charge	0.00290	7.25	0.00290	7.25	0.00290	7.25	-	0.0%
Working Capital Fund Surcharge	0.00000	-	0.00000	-	0.00000	-		
Total Electric Charge before Fuel Recovery Charges		236.35		236.35		309.83		
Fuel Recovery Charge (LEAC)	<b>0.261995</b>	654.99	<b>0.208802</b>	522.01	<b>0.135840</b>	339.60	\$(0.072962)	-34.9%
Total Electric Charge		<u>\$891.33</u>		<u>\$ 758.35</u>		<u>\$ 649.43</u>		
Increase/(Decrease) in Total Bill				<u>\$ (132.98)</u>		<u>\$ (108.92)</u>		
% Increase/(Decrease) in Total Bill				<b>-14.92%</b>		<b>-14.36%</b>		
% Increase/(Decrease) in LEAC rate				<b>-20.30%</b>		<b>-34.94%</b>		

Note:

- The proposed LEAC rate may increase or decrease depending on the market price of fuel. The estimated LEAC is based on \$100 per barrel fuel cost.



# GPA Resolution FY2025-11

## Appendix A

### BILL ILLUSTRATION RATE SCHEDULE D - CONDOMINIUM OR APARTMENT SERVICES

		RATE SCHEDULE D							
		Prior Rate Eff 08-01-24		Current Eff 02-01-25		Proposed Eff 09-01-2025			
THREE PHASE									
KWH			101,400		101,400		101,400		
MINIMUM DEMAND	210								
Monthly Charge		\$ 59.25	\$ 59.25	\$ 59.25	\$ 59.25	\$ 80.50	\$ 80.50	\$ 21.25	35.9%
Demand Charge (\$/kW-month)	210	12.00	2,520.00	12.00	\$ 2,520.00	16.00	3,360.00	4.00	33.3%
Energy Charge (\$/kWh-month)									
All energy	101,400	0.06060	6,144.84	0.06060	\$ 6,144.84	0.08086	8,199.20	0.02026	33.4%
Emergency Water-well charge	101,400	0.00279	282.91	0.00279	\$ 282.91	0.00279	282.91	-	0.0%
Self-Insurance Charge	101,400	0.00290	294.06	0.00290	\$ 294.06	0.00290	294.06	-	0.0%
WCF Surcharge	101,400	-	-	-	\$ -	-	-		
Total Electric Charge before Fuel Recovery Charges			9,301.06		\$ 9,301.06		12,216.67		
Fuel Recovery Charge (LEAC)	101,400	<b>0.261995</b>	26,566.29	<b>0.208802</b>	\$ 21,172.52	<b>0.135840</b>	13,774.18	\$ (0.072962)	-34.9%
Total Electric Charge			\$ 35,867.35		\$ 30,473.58		\$ 25,990.85		
Increase/(Decrease) in Total Bill					\$ (5,393.77)		\$ (4,482.73)		
% Increase/(Decrease) in Total Bill					<b>-15.04%</b>		<b>-14.71%</b>		
% Increase/(Decrease) in LEAC rate					<b>-20.30%</b>		<b>-34.94%</b>		

Note:

- The proposed LEAC rate may increase or decrease depending on the market price of fuel. The estimated LEAC is based on \$100 per barrel fuel cost.



# GPA Resolution FY2025-11

## Appendix A - BILL ILLUSTRATION RATE SCHEDULE P - LARGE POWER SERVICE (THREE PHASE)

	kW/kWh Billed	RATE SCHEDULE P								
		Prior Rate		Current		Proposed				
		Eff 08-01-24		Eff 02-01-25		Eff 09-01-2025				
THREE PHASE										
KWH			101,400		101,400		101,400			
MINIMUM DEMAND	210									
Monthly Charge		\$ 59.25	\$ 59.25	\$ 59.25	\$ 59.25	\$ 80.50	\$ 80.50	\$ 21.25	35.9%	
Demand Charge (\$/kW-month)	210	8.94	1,877.40	8.94	1,877.40	11.90	2,499.00	2.96	33.1%	
Energy Charge (\$/kWh-month)										
First Block - First 55,000 kWh per month (\$/kWh)	55,000	0.14170	7,793.50	0.14170	7,793.50	0.18869	10,377.95	0.04699	33.2%	
Second Block - > 55,000 kWh per month (\$/kWh)	46,400	0.06444	2,990.02	0.06444	2,990.02	0.08581	3,981.58	0.02137	33.2%	
Emergency Water-well charge	101,400	0.00279	282.91	0.00279	282.91	0.00279	282.91	-	0.0%	
Self-Insurance Charge	101,400	0.00290	294.06	0.00290	294.06	0.00290	294.06	-	0.0%	
WCF Surcharge	101,400	-	-	-	-	-	-	-	-	
Total Electric Charge before Fuel Recovery Charges			13,297.13		13,297.13		17,516.00			
Fuel Recovery Charge (LEAC)	101,400	<b>0.261995</b>	26,566.29	<b>0.208802</b>	21,172.52	<b>0.135840</b>	13,774.18	\$ (0.07296)	-34.9%	
Total Electric Charge			<u>\$ 39,863.43</u>		<u>\$ 34,469.65</u>		<u>\$ 31,290.18</u>			
Increase/(Decrease) in Total Bill					<u>\$ (5,393.77)</u>		<u>\$ (3,179.48)</u>			
% Increase/(Decrease) in Total Bill					<b>-13.53%</b>		<b>-9.22%</b>			
% Increase/(Decrease) in LEAC rate					<b>-20.30%</b>		<b>-34.94%</b>			

Note:

- The proposed LEAC rate may increase or decrease depending on the market price of fuel. The estimated LEAC is based on \$100 per barrel fuel cost.



# GPA Resolution FY2025-11

## Appendix A

### BILL ILLUSTRATION RATE SCHEDULE G - SMALL NON DEMAND (SINGLE PHASE)

		RATE SCHEDULE G (Single Phase)								
		Prior Rate Eff 08-01-24		Current Eff 02-01-25		Proposed Eff 09-01-2025				
SINGLE PHASE										
KWH		5,000		5,000		5,000				
Monthly Charge		14.16	\$ 14.16	14.16	\$ 14.16	19.25	\$ 19.25	\$ 5.09	35.9%	
Non-Fuel Energy Charge										
First 350 KWH per month	350	0.20086	70.30	0.20086	70.30	0.26574	93.01	0.06488	32.3%	
Over 350 KWH per month	4,650	0.10861	505.04	0.10861	505.04	0.14369	668.16	0.03508	32.3%	
Emergency Water-well charge		5,000	0.00279	13.95	0.00279	13.95	0.00279	13.95	-	0.0%
Self-Insurance Charge		5,000	0.00290	14.50	0.00290	14.50	0.00290	14.50	-	0.0%
WCF Surcharge		5,000	-	-	-	-	-	-	-	-
Total Electric Charge before Fuel Recovery Charges		617.95		617.95		808.87				
Fuel Recovery Charge (LEAC)		<b>0.261995</b>	1,309.98	<b>0.208802</b>	1,044.01	<b>0.135840</b>	679.20	\$ (0.07296)	-34.9%	
Total Electric Charge		\$ 1,927.92		\$ 1,661.96		\$ 1,488.07				
Increase( Decrease) in Total Bill				\$ (265.97)		\$ (173.89)				
% Increase/(Decrease) in Total Bill				<b>-13.80%</b>		<b>-10.46%</b>				
% Increase/(Decrease) in LEAC rate				<b>-20.30%</b>		<b>-34.94%</b>				

- Note:
- The proposed LEAC rate may increase or decrease depending on the market price of fuel. The estimated LEAC is based on \$100 per barrel fuel cost.



# GPA Resolution FY2025-11

## Appendix A

### BILL ILLUSTRATION RATE SCHEDULE G - SMALL NON DEMAND (THREE PHASE)

		RATE SCHEDULE G (Three Phase)							
		Prior Rate Eff 08-01-24		Current Eff 02-01-25		Proposed Eff 09-01-2025			
THREE PHASE									
KWH			5,000		5,000		5,000		
Monthly Charge		\$ 14.16	\$ 14.16	\$ 14.16	\$ 14.16	19.50	\$ 19.50	\$ 5.34	37.7%
Non-Fuel Energy Charge									
First 500 KWH per month	500	0.19785	98.93	0.19785	98.93	0.26209	131.05	0.06424	32.5%
Over 500 KWH per month	4,500	0.10608	477.36	0.10608	477.36	0.14052	632.34	0.03444	32.5%
Emergency Water-well charge	5,000	0.00279	13.95	0.00279	13.95	0.00279	13.95	-	0.0%
Self-Insurance Charge	5,000	0.00290	14.50	0.00290	14.50	0.00290	14.50	-	0.0%
WCF Surcharge	5,000	-	-	-	-	-	-	-	
Total Electric Charge before Fuel Recovery Charges			618.90		618.90		811.34		
Fuel Recovery Charge (LEAC)		<b>0.261995</b>	1,309.98	<b>0.208802</b>	1,044.01	<b>0.135840</b>	679.20	\$ (0.07296)	-34.9%
Total Electric Charge			\$ <u>1,928.87</u>		\$ <u>1,662.91</u>		\$ <u>1,490.54</u>		
Increase( Decrease) in Total Bill					\$ <u>(265.97)</u>		\$ <u>(438.34)</u>		
% Increase/(Decrease) in Total Bill					<b>-13.79%</b>		<b>-10.37%</b>		
% Increase/(Decrease) in LEAC rate					<b>-20.30%</b>		<b>-34.94%</b>		

Note:

- The proposed LEAC rate may increase or decrease depending on the market price of fuel. The estimated LEAC is based on \$100 per barrel fuel cost.



# GPA Resolution FY2025-11

## Appendix A

### BILL ILLUSTRATION RATE SCHEDULE J - SMALL DEMAND (SINGLE PHASE)

		RATE SCHEDULE J (Single Phase)							
		Prior Rate Eff 08-01-24		Current Eff 02-01-25		Proposed Eff 09-01-2025			
SINGLE PHASE									
KWH			25,000		25,000		25,000		
DEMAND (kW Billed)	35								
Monthly Charge		\$ 38.33	\$ 38.33	\$ 38.33	\$ 38.33	\$ 52.00	\$ 52.00	\$ 13.67	35.7%
Demand Charge (\$/kW-month)	35	6.16	215.60	6.16	215.60	8.18	286.30	2.02	32.8%
Energy Charge									
First Block - First 2,000 kWh per month (\$/kWh)	2,000	0.19676	393.52	0.19676	393.52	0.26136	522.72	0.06460	32.8%
Second Block - > 2,000 kWh per month (\$/kWh)	23,000	0.06554	1,507.42	0.06554	1,507.42	0.08706	2,002.38	0.02152	32.8%
Emergency Water-well charge	25,000	0.00279	69.75	0.00279	69.75	0.00279	69.75	-	0.0%
Self-Insurance Charge	25,000	0.00290	72.50	0.00290	72.50	0.00290	72.50	-	0.0%
WCF Surcharge	25,000	-	-	-	-	-	-	-	
Total Electric Charge before Fuel Recovery Charges			2,297.12		2,297.12		3,005.65		
Fuel Recovery Charge (LEAC)		<b>0.261995</b>	6,549.88	<b>0.208802</b>	5,220.05	<b>0.135840</b>	3,396.00	\$ (0.07296)	-34.9%
Total Electric Charge			<u>\$ 8,847.00</u>		<u>\$ 7,517.17</u>		<u>\$ 6,401.65</u>		
Increase( Decrease) in Total Bill					<u>\$ (1,329.83)</u>		<u>\$ (1,115.52)</u>		
% Increase/(Decrease) in Total Bill					<b>-15.03%</b>		<b>-14.84%</b>		
% Increase/(Decrease) in LEAC rate					<b>-20.30%</b>		<b>-34.94%</b>		

Note:

- The proposed LEAC rate may increase or decrease depending on the market price of fuel. The estimated LEAC is based on \$100 per barrel fuel cost.



# GPA Resolution FY2025-11

## Appendix A

### BILL ILLUSTRATION RATE SCHEDULE J - SMALL DEMAND (THREE PHASE)

		RATE SCHEDULE J (Three Phase)								
		Prior Rate Eff 08-01-24		Current Eff 02-01-25		Proposed Eff 09-01-2025				
THREE PHASE										
KWH			117,200		117,200		117,200			
DEMAND (kW Billed)	163									
Monthly Charge		\$ 38.33	\$ 38.33	\$ 38.33	\$ 38.33	\$ 52.10	\$ 52.10	\$ 13.77		35.9%
Demand Charge (\$/kW-month)	163	5.80	945.40	5.80	945.40	7.71	1,256.73	1.91		32.9%
Energy Charge										
First Block - First 5,000 kWh per month (\$/kWh)	5,000	0.19437	971.85	0.19437	971.85	0.25850	1,292.50	0.06413		33.0%
Second Block - > 5,000 kWh per month (\$/kWh)	112,200	0.06484	7,275.05	0.06484	7,275.05	0.08623	9,675.01	0.02139		33.0%
Emergency Water-well charge	117,200	0.00279	326.99	0.00279	326.99	0.00279	326.99	-		0.0%
Self-Insurance Charge	117,200	0.00290	339.88	0.00290	339.88	0.00290	339.88	-		0.0%
WCF Surcharge	117,200	-	-	-	-	-	-	-		
Total Electric Charge before Fuel Recovery Charges			9,897.50		9,897.50		\$ 12,943.20			
Fuel Recovery Charge (LEAC)		<b>0.261995</b>	30,705.81	<b>0.208802</b>	24,471.59	<b>0.135840</b>	\$ 15,920.45	\$ (0.07296)		-34.9%
Total Electric Charge			<u>\$40,603.31</u>		<u>34,369.09</u>		<u>\$ 28,863.65</u>			
Increase( Decrease) in Total Bill					(6,234.22)		\$ (5,505.44)			
% Increase/(Decrease) in Total Bill					<b>-15.35%</b>		<b>-16.02%</b>			
% Increase/(Decrease) in LEAC rate					<b>-20.30%</b>		<b>-34.94%</b>			

Note:

- The proposed LEAC rate may increase or decrease depending on the market price of fuel. The estimated LEAC is based on \$100 per barrel fuel cost.



# GPA Resolution FY2025-11

## Appendix A - BILL ILLUSTRATION RATE SCHEDULE L - LARGE GOVT SERVICE (THREE PHASE)

			RATE SCHEDULE L							
			Prior Rate		Current		Proposed			
			Eff 08-01-24		Eff 02-01-25		Eff 09-01-2025			
	kW/kWh Billed									
THREE PHASE										
KWH				634,200		634,200		634,200		
MINIMUM DEMAND	200	1,158								
Monthly Charge			\$ 59.25	\$ 59.25	\$ 59.25	59.25	\$ 80.50	\$ 80.50	\$ 21.25	35.9%
Demand Charge (\$/kW-month)		1,158	8.94	10,352.52	8.94	10,352.52	11.88	13,757.04	2.94	32.9%
Energy Charge (\$/kWh-month)										
First Block - First 38,000 kWh per month (\$/kWh)		38,000	0.16495	6,268.10	0.16495	6,268.10	0.21922	8,330.36	0.05427	32.9%
Second Block - > 38,000 kWh per month (\$/kWh)		596,200	0.08090	48,232.58	0.08090	48,232.58	0.10752	64,103.42	0.02662	32.9%
Emergency Water-well charge		634,200	0.00279	1,769.42	0.00279	1,769.42	0.00279	1,769.42	-	0.0%
Self-Insurance Charge		634,200	0.00290	1,839.18	0.00290	1,839.18	0.00290	1,839.18	-	0.0%
WCF Surcharge		634,200	-	-	-	-	-	-	-	
Total Electric Charge before Fuel Recovery Charges				68,521.05		68,521.05		89,879.92		
Fuel Recovery Charge (LEAC)		634,200	<b>0.261995</b>	166,157.23	<b>0.208802</b>	132,422.23	<b>0.135840</b>	86,149.73	\$ (0.07296)	-34.9%
Total Electric Charge				<u>\$234,678.28</u>		<u>200,943.28</u>		<u>176,029.65</u>		
Increase/(Decrease) in Total Bill						<u>(\$33,735.00)</u>		<u>(\$24,913.63)</u>		
% Increase/(Decrease) in Total Bill						<b>-14.37%</b>		<b>-12.40%</b>		
% Increase/(Decrease) in LEAC rate						<b>-20.30%</b>		<b>-34.94%</b>		

Note: The proposed LEAC rate may increase or decrease depending on the market price of fuel. The estimated LEAC is based on \$100 per barrel fuel cost.



# GPA Resolution FY2025-11

## Appendix A

### BILL ILLUSTRATION RATE SCHEDULE S - SMALL GOVT SERVICE (SINGLE PHASE)

		RATE SCHEDULE S (Single Phase)							
		Prior Rate Eff 08-01-24		Current Eff 02-01-25		Proposed Eff 09-01-2025			
SINGLE PHASE									
KWH			5,000		5,000		5,000		
Monthly Charge		14.16	\$ 14.16	14.16	\$ 14.16	19.50	\$ 19.50	\$ 5.34	37.7%
Non-Fuel Energy Charge									
First 300 KWH per month	300	0.23097	69.29	0.23097	69.29	0.34740	104.22	0.11643	50.4%
Over 300 KWH per month	4,700	0.12786	600.94	0.12786	600.94	0.16870	792.89	0.04084	31.9%
Emergency Water-well charge	5,000	0.00279	13.95	0.00279	13.95	0.00279	13.95	-	0.0%
Self-Insurance Charge	5,000	0.00290	14.50	0.00290	14.50	0.00290	14.50	-	0.0%
WCF Surcharge	5,000		-		-		-		
Total Electric Charge before Fuel Recovery Charges			712.84		712.84		945.06		
Fuel Recovery Charge (LEAC)		<b>0.261995</b>	1,309.98	<b>0.208802</b>	1,044.01	<b>0.135840</b>	679.20	\$ (0.07296)	-34.9%
Total Electric Charge			\$ 2,022.82		\$ 1,756.85		\$ 1,624.26		
Increase( Decrease) in Total Bill					(265.97)		\$ (132.59)		
% Increase/(Decrease) in Total Bill					-13.15%		-7.55%		
% Increase/(Decrease) in LEAC rate					-20.30%		-34.94%		

Note:

- The proposed LEAC rate may increase or decrease depending on the market price of fuel. The estimated LEAC is based on \$100 per barrel fuel cost.



# GPA Resolution FY2025-11

## Appendix A

### BILL ILLUSTRATION RATE SCHEDULE S - SMALL GOVT SERVICE (THREE PHASE)

		RATE SCHEDULE S (Three Phase)							
		Prior Rate Eff 08-01-24		Current Eff 02-01-25		Proposed Eff 09-01-2025			
THREE PHASE									
KWH									
		5,000		5,000		5,000			
Monthly Charge		\$ 14.16	\$ 14.16	\$ 14.16	\$ 14.16	19.50	\$ 19.50	\$ 5.34	37.7%
Non-Fuel Energy Charge									
First 500 KWH per month	500	0.22945	114.73	0.22945	114.73	0.30410	152.05	0.07465	32.5%
Over 500 KWH per month	4,500	0.12095	544.28	0.12095	544.28	0.16030	721.35	0.03935	32.5%
Emergency Water-well charge	5,000	0.00279	13.95	0.00279	13.95	0.00279	13.95	-	0.0%
Self-Insurance Charge	5,000	0.00290	14.50	0.00290	14.50	0.00290	14.50	-	0.0%
WCF Surcharge	5,000	-	-	-	-	-	-	-	-
Total Electric Charge before Fuel Recovery Charges			\$ 701.61		\$ 701.61		\$ 921.35		
Fuel Recovery Charge (LEAC)		<b>0.261995</b>	\$ 1,309.98	<b>0.208802</b>	\$ 1,044.01	<b>0.135840</b>	\$ 679.20	\$ (0.07296)	-34.9%
Total Electric Charge			\$ 2,011.59		\$ 1,745.62		\$ 1,600.55		
Increase( Decrease) in Total Bill					\$ (265.97)		\$ (411.04)		
% Increase/(Decrease) in Total Bill					-13.22%		-8.31%		
% Increase/(Decrease) in LEAC rate					-20.30%		-34.94%		

Note:

- The proposed LEAC rate may increase or decrease depending on the market price of fuel. The estimated LEAC is based on \$100 per barrel fuel cost.



# GPA Resolution FY2025-11

## Appendix A - BILL ILLUSTRATION RATE SCHEDULE K - SMALL DEMAND (SINGLE PHASE)

		RATE SCHEDULE K (Single Phase)							
		Prior Rate Eff 08-01-24		Current Eff 02-01-25		Proposed Eff 09-01-2025			
SINGLE PHASE									
KWH			25,000		25,000		25,000		
DEMAND (kW Billed)	35								
Monthly Charge		\$ 38.33	\$ 38.33	\$ 38.33	\$ 38.33	\$ 52.00	\$ 52.00	\$ 13.67	35.7%
Demand Charge (\$/kW-month)	35	7.25	253.75	7.25	253.75	9.61	336.35	2.36	32.6%
Energy Charge									
First Block - First 1,600 kWh per month (\$/kWh)	1,600	0.18065	289.04	0.18065	289.04	0.23945	383.12	0.05880	32.5%
Second Block - > 1,600 kWh per month (\$/kWh)	23,400	0.08970	2,098.98	0.08970	2,098.98	0.11889	2,782.03	0.02919	32.5%
Emergency Water-well charge	25,000	0.00279	69.75	0.00279	69.75	0.00279	69.75	-	0.0%
Self-Insurance Charge	25,000	0.00290	72.50	0.00290	72.50	0.00290	72.50	-	0.0%
WCF Surcharge	25,000	-	-	-	-	-	-	-	
Total Electric Charge before Fuel Recovery Charges			\$ 2,822.35		\$ 2,822.35		\$ 3,695.75		
Fuel Recovery Charge (LEAC)		<b>0.261995</b>	\$ 6,549.88	<b>0.208802</b>	\$ 5,220.05	<b>0.135840</b>	\$ 3,396.00	\$ (0.07296)	-34.9%
Total Electric Charge			\$ 9,372.23		\$ 8,042.40		\$ 7,091.75		
Increase( Decrease) in Total Bill					\$ (1,329.83)		\$ (950.65)		
% Increase/(Decrease) in Total Bill					-14.19%		-11.82%		
% Increase/(Decrease) in LEAC rate					-20.30%		-34.94%		

Note:

- The proposed LEAC rate may increase or decrease depending on the market price of fuel. The estimated LEAC is based on \$100 per barrel fuel cost.



# GPA Resolution FY2025-11

## Appendix A

### BILL ILLUSTRATION RATE SCHEDULE K - SMALL DEMAND (THREE PHASE)

		RATE SCHEDULE K (Three Phase)							
		Prior Rate Eff 08-01-24		Current Eff 02-01-25		Proposed Eff 09-01-2025			
THREE PHASE									
KWH			117,200		117,200		117,200		
DEMAND (kW Billed)	163								
Monthly Charge		\$ 38.33	\$ 38.33	\$ 38.33	\$ 38.33	\$ 52.00	\$ 52.00	\$ 13.67	35.7%
Demand Charge (\$/kW-month)	163	8.43	1,374.09	8.43	1,374.09	11.19	1,823.97	2.76	32.7%
Energy Charge									
First Block - First 7,000 kWh per month (\$/kWh)	7,000	0.17960	1,257.20	0.17960	1,257.20	0.23843	1,669.01	0.05883	32.8%
Second Block - > 7,000 kWh per month (\$/kWh)	110,200	0.08365	9,218.23	0.08365	9,218.23	0.11105	12,237.71	0.02740	32.8%
Emergency Water-well charge	117,200	0.00279	326.99	0.00279	326.99	0.00279	326.99	-	0.0%
Self-Insurance Charge	117,200	0.00290	339.88	0.00290	339.88	0.00290	339.88	-	0.0%
WCF Surcharge	117,200	-	-	-	-	-	-	-	-
Total Electric Charge before Fuel Recovery Charges			12,554.72		12,554.72		16,449.56		
Fuel Recovery Charge (LEAC)		<b>0.261995</b>	30,705.81	<b>0.208802</b>	24,471.59	<b>0.135840</b>	15,920.45	\$ (0.07296)	-34.9%
Total Electric Charge			<u>\$43,260.53</u>		<u>37,026.31</u>		<u>\$ 32,370.01</u>		
Increase( Decrease) in Total Bill					(6,234.22)		(4,656.31)		
% Increase/(Decrease) in Total Bill					-14.41%		-12.58%		
% Increase/(Decrease) in LEAC rate					-20.30%		-34.94%		

Note:

- The proposed LEAC rate may increase or decrease depending on the market price of fuel. The estimated LEAC is based on \$100 per barrel fuel cost.



# GPA Resolution FY2025-11

## Appendix A - BILL ILLUSTRATION RATE SCHEDULE N-NAVY (Alternative Navy Rate)

				RATE SCHEDULE N					
				Current Eff 02-01-25		Proposed Eff 09-01-2025			
Customer Charge				\$ 10,990.00	\$ 131,880.00	\$ 12,000.00	\$ 144,000.00	\$ 1,010.00	9.2%
Demand Charge	44,077	kW		34.48	1,519,774.96				
Charge per contract capacity	47,000	kW				43.36	2,037,920.00		
Charge per kW above contract capacity	-	kW				520.34	-		
Non Fuel Energy Charge	28,625,019	kWh		0.00495	141,693.84	0.00495	141,693.84	-	0.0%
Insurance Charge	-	kWh		0.00070	-	0.00070	-		
WCF Surcharge				-	-	-	-		
Wheeling	703,294	kWh		0.02000	14,065.88	0.02000	333,212.16		
Total Electric Charge before Fuel Recovery Charges					1,675,534.68		2,512,826.00		
Fuel Recovery Charge (LEAC)	28,625,019	kWh		<b>0.208802</b>	5,976,961.22	<b>0.135840</b>	3,888,422.58	\$ (0.07296)	-34.9%
Total Electric Charge					\$ 7,652,495.90		\$ 6,401,248.59		
Increase/(Decrease) in Total Bill							\$ (1,251,247)		
% Increase/(Decrease) in Total Bill							-16.35%		
% Increase/(Decrease) in LEAC rate							-34.94%		

Note:

- The proposed LEAC rate may increase or decrease depending on the market price of fuel. The estimated LEAC is based on \$100 per barrel fuel cost.
- Monthly bill is fixed based on contract capacity at the time of contract. The Navy is required to provide three years of capacity need. Rate equivalent of 12 times the contract capacity will be assessed each month the capacity is exceeded.



# GPA Resolution FY2025-11

## Appendix A - BILL ILLUSTRATION RATE SCHEDULE H - PRIVATE OUTDOOR LIGHTING

HIGH INDENSITY DISCHARGE	Current		Proposed			
	Eff 02-01-25		Eff 09-01-2025			
WATTAGE		400		400		
KWHR PER MONTH		163		163		
Monthly Facility Charge	\$ 29.50	\$ 29.50	\$ 38.51	\$38.51	\$ 9.01	30.5%
Monthly Energy charge						
per kwh	0.10784	17.58	0.14655	23.89	0.03871	35.9%
Insurance Charge	0.00290	0.47	0.00290	0.47	-	0.0%
Working Capital Fund(WCF) Surcharge	0.00000	-	-	-		
Fuel Recovery Charge (LEAC)	<b>0.208802</b>	34.03	<b>0.135840</b>	22.14	\$ (0.07296)	-34.9%
Total Electric Charge		\$ 81.59		\$85.01		
Increase/(Decrease) in Total Bill				\$ 3.43		
% Increase/(Decrease) in Total Bill				4.20%		
% Increase/(Decrease) in LEAC rate				-34.94%		

Note:

- The proposed LEAC rate may increase or decrease depending on the market price of fuel. The estimated LEAC is based on \$100 per barrel fuel cost.



# GPA Resolution FY2025-11

## Appendix A

### BILL ILLUSTRATION RATE SCHEDULE H - PRIVATE OUTDOOR LIGHTING

HIGH PRESSURE SODIUM (Lucalox)	Current		Proposed			
	Eff 02-01-25		Eff 09-01-2025			
WATTAGE		250		250		
KWHR PER MONTH		101		101		
Monthly Facility Charge	\$ 26.15	\$ 26.15	\$ 34.14	\$34.14	\$ 7.99	30.6%
Monthly Energy charge						
per kwh	0.10784	10.89	0.14655	14.80	0.03871	35.9%
Insurance Charge	0.00290	0.29	0.00290	0.29	-	0.0%
Working Capital Fund(WCF) Surcharge	0.00000	-	-	-		
Fuel Recovery Charge (LEAC)	<b>0.208802</b>	21.09	<b>0.135840</b>	13.72	\$ (0.07296)	-34.9%
Total Electric Charge		\$ 58.42		\$62.95		
Increase/(Decrease) in Total Bill				\$ 4.53		
% Increase/(Decrease) in Total Bill				7.75%		
% Increase/(Decrease) in LEAC rate				-34.94%		

Note:

- The proposed LEAC rate may increase or decrease depending on the market price of fuel. The estimated LEAC is based on \$100 per barrel fuel cost.

# GPA Resolution FY2025-11

## Appendix A

### BILL ILLUSTRATION RATE SCHEDULE H - PRIVATE OUTDOOR LIGHTING

HIGH PRESSURE SODIUM (HPS)	Current		Proposed			
	Eff 02-01-25		Eff 09-01-2025			
WATTAGE		150		150		
KWHR PER MONTH		54		54		
Monthly Facility Charge	\$ 19.10	\$ 19.10	\$ 24.94	\$24.94	\$ 5.84	30.6%
Monthly Energy charge						
per kwh	0.10784	5.82	0.14655	7.91	0.03871	35.9%
Insurance Charge	0.00290	0.16	0.00290	0.16	-	0.0%
Working Capital Fund(WCF) Surcharge	0.00000	-	-	-		
Fuel Recovery Charge (LEAC)	<b>0.208802</b>	<u>11.28</u>	<b>0.135840</b>	<u>7.34</u>	\$ (0.07296)	-34.9%
Total Electric Charge		<u>\$ 36.36</u>		<u>\$40.35</u>		
Increase/(Decrease) in Total Bill				<u>\$ 3.99</u>		
% Increase/(Decrease) in Total Bill				<b>10.98%</b>		
% Increase/(Decrease) in LEAC rate				<b>-34.94%</b>		

Note:

- The proposed LEAC rate may increase or decrease depending on the market price of fuel. The estimated LEAC is based on \$100 per barrel fuel cost.



# GPA Resolution FY2025-11

## Appendix A

### BILL ILLUSTRATION RATE SCHEDULE H - PRIVATE OUTDOOR LIGHTING

LED (250W)	Current		Proposed			
	Eff 02-01-25		Eff 09-01-2025			
		120		120		
		43.2		43.2		
Monthly Facility Charge	\$ 26.15	\$ 26.15	\$ 34.14	\$34.14	\$ 7.99	30.6%
Monthly Energy charge						
per kwh	0.10784	4.66	0.14655	6.33	0.03871	35.9%
Insurance Charge	0.00290	0.13	0.00290	0.13	-	0.0%
Working Capital Fund(WCF) Surcharge	0.00000	-	-	-		
Fuel Recovery Charge (LEAC)	<b>0.208802</b>	<u>9.02</u>	<b>0.135840</b>	<u>5.87</u>	\$ (0.07296)	-34.9%
Total Electric Charge		<u>\$ 39.95</u>		<u>\$46.46</u>		
Increase/(Decrease) in Total Bill		-		<u>\$ 6.51</u>		
% Increase/(Decrease) in Total Bill				<b>16.29%</b>		
% Increase/(Decrease) in LEAC rate				<b>-34.94%</b>		

Note:

- The proposed LEAC rate may increase or decrease depending on the market price of fuel. The estimated LEAC is based on \$100 per barrel fuel cost.



# GPA Resolution FY2025-11

## Appendix A

### BILL ILLUSTRATION RATE SCHEDULE H - PRIVATE OUTDOOR LIGHTING

LED (150W)	Current		Proposed			
	Eff 02-01-25		Eff 09-01-2025			
WATTAGE		67		67		
KWHR PER MONTH		24.1		24.1		
Monthly Facility Charge	\$ 19.10	\$ 19.10	\$ 24.94	\$24.94	\$ 5.84	30.6%
Monthly Energy charge						
per kwh	0.10784	2.60	0.14655	3.53	0.03871	35.9%
Insurance Charge	0.00290	0.07	0.00290	0.07	-	0.0%
Working Capital Fund(WCF) Surcharge	0.00000	-	-	-		
Fuel Recovery Charge (LEAC)	<b>0.208802</b>	<u>5.03</u>	<b>0.135840</b>	<u>3.27</u>	\$ (0.07296)	-34.9%
Total Electric Charge		<u>\$ 26.80</u>		<u>\$31.82</u>		
Increase/(Decrease) in Total Bill				<u>\$ 5.01</u>		
% Increase/(Decrease) in Total Bill				<b>18.71%</b>		
% Increase/(Decrease) in LEAC rate				<b>-34.94%</b>		

Note:

- The proposed LEAC rate may increase or decrease depending on the market price of fuel. The estimated LEAC is based on \$100 per barrel fuel cost.



# GPA Resolution FY2025-11

## Appendix A

### BILL ILLUSTRATION RATE SCHEDULE F - PUBLIC OUTDOOR LIGHTING

HIGH INDENSITY DISCHARGE	Current		Proposed			
	Eff 02-01-25		Eff 09-01-2025			
WATTAGE		400			400	
KWHR PER MONTH		163			163	
Monthly Facility Charge	\$ 29.50	\$ 29.50	\$ 38.67	\$ 38.67	\$ 9.17	31.1%
Monthly Energy charge per kwh	0.05245	8.55	0.07128	11.62	0.01883	35.9%
Insurance Charge	0.00290	0.47	0.00290	0.47	-	0.0%
Working Capital Fund(WCF) Surcharge	0.00000	-	-	-		
Fuel Recovery Charge (LEAC)	<b>0.208802</b>	34.03	<b>0.135840</b>	22.14	\$ (0.07296)	-34.9%
Total Electric Charge		\$ 72.56		\$ 72.91		
Increase/(Decrease) in Total Bill				\$ 0.35		
% Increase/(Decrease) in Total Bill				0.48%		
% Increase/(Decrease) in LEAC rate				-34.94%		

Note:

- The proposed LEAC rate may increase or decrease depending on the market price of fuel. The estimated LEAC is based on \$100 per barrel fuel cost.



# GPA Resolution FY2025-11

## Appendix A

### BILL ILLUSTRATION RATE SCHEDULE F - PUBLIC OUTDOOR LIGHTING

HIGH PRESSURE SODIUM (Lucalox)	Current		Proposed			
	Eff 02-01-25		Eff 09-01-2025			
WATTAGE		250		250		
KWHR PER MONTH		101		101		
Monthly Facility Charge	\$ 26.15	\$ 26.15	\$ 34.28	\$ 34.28	\$ 8.13	31.1%
Monthly Energy charge per kwh	0.05245	5.30	0.07128	7.20	0.01883	35.9%
Insurance Charge	0.00290	0.29	0.00290	0.29	-	0.0%
Working Capital Fund(WCF) Surcharge	0.00000	-	-	-		
Fuel Recovery Charge (LEAC)	<b>0.208802</b>	21.09	<b>0.135840</b>	13.72	\$ (0.07296)	-34.9%
Total Electric Charge		\$ 52.83		\$ 55.49		
Increase/(Decrease) in Total Bill				\$ 2.66		
% Increase/(Decrease) in Total Bill				5.04%		
% Increase/(Decrease) in LEAC rate				-34.94%		

Note:

- The proposed LEAC rate may increase or decrease depending on the market price of fuel. The estimated LEAC is based on \$100 per barrel fuel cost.



# GPA Resolution FY2025-11

## Appendix A

### BILL ILLUSTRATION RATE SCHEDULE F - PUBLIC OUTDOOR LIGHTING

HIGH PRESSURE SODIUM (HPS)	Current		Proposed			
	Eff 02-01-25		Eff 09-01-2025			
WATTAGE		150		150		
KWHR PER MONTH		54		54		
Monthly Facility Charge	\$ 19.10	\$ 19.10	\$ 25.04	\$ 25.04	\$ 5.94	31.1%
Monthly Energy charge per kwh	0.05245	2.83	0.07128	3.85	0.01883	35.9%
Insurance Charge	0.00290	0.16	0.00290	0.16	-	0.0%
Working Capital Fund(WCF) Surcharge	0.00000	-	-	-		
Fuel Recovery Charge (LEAC)	<b>0.208802</b>	11.28	<b>0.135840</b>	7.34	\$ (0.07296)	-34.9%
Total Electric Charge		\$ 33.36		\$ 36.38		
Increase/(Decrease) in Total Bill		-		\$ 3.02		
% Increase/(Decrease) in Total Bill				9.04%		
% Increase/(Decrease) in LEAC rate				-34.94%		

Note:

- The proposed LEAC rate may increase or decrease depending on the market price of fuel. The estimated LEAC is based on \$100 per barrel fuel cost.



# GPA Resolution FY2025-11

## Appendix A

### BILL ILLUSTRATION RATE SCHEDULE F - PUBLIC OUTDOOR LIGHTING

	Current		Proposed			
	Eff 02-01-25		Eff 09-01-2025			
LED (250W)		120		120		
		43.2		43.2		
Monthly Facility Charge	\$ 26.15	\$ 26.15	\$ 34.28	\$ 34.28	\$ 8.13	31.1%
Monthly Energy charge per kwh	0.05245	2.27	0.07128	3.08	0.01883	35.9%
Insurance Charge	0.00290	0.13	0.00290	0.13	-	0.0%
Working Capital Fund(WCF) Surcharge	0.00000	-	-	-		
Fuel Recovery Charge (LEAC)	<b>0.208802</b>	9.02	<b>0.135840</b>	5.87	\$ (0.07296)	-34.9%
Total Electric Charge		<u>\$ 37.56</u>		<u>\$ 43.35</u>		
Increase/(Decrease) in Total Bill				<u>\$ 5.79</u>		
% Increase/(Decrease) in Total Bill				<b>15.42%</b>		
% Increase/(Decrease) in LEAC rate				<b>-34.94%</b>		

Note:

- The proposed LEAC rate may increase or decrease depending on the market price of fuel. The estimated LEAC is based on \$100 per barrel fuel cost.



# GPA Resolution FY2025-11

## Appendix A

### BILL ILLUSTRATION RATE SCHEDULE F - PUBLIC OUTDOOR LIGHTING

LED (150W)	Current		Proposed			
	Eff 02-01-25		Eff 09-01-2025			
WATTAGE		67		67		
KWHR PER MONTH		24.1		24.1		
Monthly Facility Charge	\$ 19.10	\$ 19.10	\$ 25.04	\$ 25.04	\$ 5.94	31.1%
Monthly Energy charge						
per kwh	0.05245	1.26	0.07128	1.72	0.01883	35.9%
Insurance Charge	0.00290	0.07	0.00290	0.07	-	0.0%
Working Capital Fund(WCF) Surcharge	0.00000	-	-	-		
Fuel Recovery Charge (LEAC)	<b>0.208802</b>	5.03	<b>0.135840</b>	3.27	\$ (0.07296)	-34.9%
Total Electric Charge		<u>\$ 25.47</u>		<u>\$ 30.10</u>		
Increase/(Decrease) in Total Bill				<u>\$ 4.64</u>		
% Increase/(Decrease) in Total Bill				<b>18.20%</b>		
% Increase/(Decrease) in LEAC rate				<b>-34.94%</b>		

Note:

- The proposed LEAC rate may increase or decrease depending on the market price of fuel. The estimated LEAC is based on \$100 per barrel fuel cost.



# GPA Resolution FY2025-11

## Purpose of New Ukudu Plant

KEY OBJECTIVES	On Track	To be Achieved	COMMENT
Comply with USEPA Regulations and avoid hundreds of millions in penalties (\$352M as of August 2019)	Yes	Yes	Consent Decree signed, complied with and on track
Replace Aged cabras 1&2 Units (Costly upgrades needed to comply with USEPA Regulations)	Yes	Yes	Within 6 months after Ukudu is commissioned
Meet Load Growth (Capacity added to the grid)	Yes	Yes	Capacity available by not immediately retiring other conventional units
Increase renewable integration	Yes	Yes	Plant provides increased reliability and works well with renewables
Net savings on customer bills	Yes	Yes	PUC approval to be requested; rates effective September 1, 2025
Ukudu Commissioning Date NLT September 30, 2025			

# GPA Resolution FY2025-12

Relative to Authorizing Guam Power Authority to Procure Comprehensive Unarmed Uniformed Security Guard Services

## What is the project's objective and is it necessary and urgent?

As critical infrastructure and the sole electric utility to the island of Guam, it is necessary and urgent for GPA to continue to procure comprehensive unarmed uniformed security guard services to protect and safeguard its critical physical assets and employees.

## Where is it located?

Six (6) key asset locations with flexible options to enhance security measures within the contract period dependent on resource availability and Authority's security strategy that overall improves our security posture, and minimizes security risks to customers, personnel and property.

## How much will it cost?

\$1,055,000 - \$1,150,500	Estimated Annual Cost*
\$5,275,000 - \$5,727,500	Estimated Total Contract Cost**

\*Based on current contract cost and market inflation

\*\*Based on 5-year total contract period (3-year base contract + 2 option years)

## When will it be completed?

June 30, 2030	End of Total 5-year Contract Term July 1, 2025 – June 30, 2028 Base Contract Term July 1, 2028 – June 30, 2029 1 <sup>st</sup> Renewal Option Term July 1, 2029 – June 30, 2030 2 <sup>nd</sup> Renewal Option Term
---------------	--

## What is its funding source?

O&M Funds

## The RFP/Bid Responses:

Not Applicable.

Resolution 2025-12 seeks to approve GPA to petition the PUC for authorization to procure for these services.