



Bringing Energy Solutions to You

# Insights

A monthly newsletter for all GPA Customers • Issue No. 97 • April 2025



## Brighter Days Ahead

**6 MONTHS TO GO**

## Hafa Adai to Brighter Days!

With a proposed 3¢ per kWh base rate adjustment and a proposed 13–14¢ per kWh LEAC reduction – driven by lower fuel costs from the new Ukudu Power Plant – average residential customers using 1,000 kWh per month could save an estimated \$42 per month, effective September 1, 2025 (proposed). This is in addition to the \$53 monthly reduction already in effect since February 1, 2025, for a total of \$95 per month in net savings, if approved.

These proposed adjustments will strengthen long-term reliability while reducing fuel costs by retiring older, less efficient generators. We're building a more reliable, cost-effective energy future for generations to come.

## GPA Update: Staying the Course Through Challenges Toward Reliable Energy

While GPA continues to make progress addressing the island's generation capacity shortfall, customers are reminded that load shedding remains a possibility, however, only as a last resort.

Recently, aging infrastructure and limited capacity meant generators operated continuously without sufficient maintenance, placing additional stress on equipment and heightening vulnerability to outages. Recognizing this critical issue, GPA implemented mid-term solutions—including the deployment of temporary emergency generators and accelerated maintenance programs—which have allowed much-needed preventive maintenance checks to resume. These proactive steps have significantly improved reliability, yet the risk remains, particularly when multiple baseload generators experience outages simultaneously.

GPA has emphasized that despite significant improvements, the island is not fully "out of the woods." If a generator undergoes scheduled preventive maintenance and another baseload generator unexpectedly trips offline, a temporary implementation of load shedding could be necessary to protect the broader power grid.

However, brighter days are on the horizon. The highly anticipated Ukudu Power Plant, a state-of-the-art 198MW combined-cycle facility, is scheduled to be commissioned by September 2025. In the meantime, GPA continues to encourage all customers to practice energy conservation, especially during peak hours from 5:00 pm to 11:00 pm, to help mitigate the need for outages. GPA acknowledges and deeply appreciates the community's continued patience, understanding, and cooperation during this transitional period.

With the Ukudu Power Plant soon becoming operational, Guam is steadily moving closer to more reliable power and ultimately, brighter days ahead.

## How Ukudu Is Changing the Game: What GPA's Proposed Rate Changes Mean for Guam's Energy Future

The Ukudu Power Plant is more than a capital improvement and construction milestone. The upcoming combined cycle power plant is a catalyst for transforming how Guam generates and pays for electricity. This April, GPA is advancing its effort to reshape the island's power system by preparing two coordinated rate petitions aimed at reducing overall costs while securing long-term energy reliability.

In late May, GPA will seek approval from the Consolidated Commission on Utilities (CCU) to petition the Guam Public Utilities Commission (PUC) to reduce the Fuel Recovery Charge, also known as the Levelized Energy Adjustment Clause (LEAC), by 13 to 14 cents per kilowatt-hour. In early June, GPA will file its formal petition to the PUC to implement a base rate adjustment. If approved, both rate changes will take effect on September 1, 2025.

The rate adjustments are designed to work together. The LEAC reduction, made possible by the fuel efficiency of the new Ukudu Power Plant, is expected to more than offset the base rate increase. For the average residential customer using 1,000 kWh per month, this translates to an **estimated net savings of \$42 per month**, on top

of the **\$53 monthly reduction already in effect since February 2025**. Together, the total impact is an estimated **\$95 per month in savings** compared to prior costs.

Ukudu's role in this is pivotal. The state-of-the-art power plant is expected to reduce fuel consumption by over 900,000 barrels per year and enable the retirement of older, less efficient generators like Cabras 1 and 2. This means fewer outages, lower fuel costs, and more predictable power bills.

But the benefits go beyond numbers. These proposed changes are about creating a system that works better for everyone which is more efficient, more affordable, and more resilient. GPA's mission is to deliver reliable and affordable energy on a sustained basis, and the Ukudu Power Plant is the cornerstone of Guam's energy future.

As GPA prepares its filings with the PUC, customers are encouraged to stay informed, ask questions, and learn more about how these changes will affect them. For more information, visit [guampowerauthority.com](http://guampowerauthority.com) or follow us on social media for updates.



**Smarter Energy, Bigger Benefits**

The Ukudu Power Plant will replace aging generators and save

**+900,000**

Barrels of Oil annually.

### RESIDENTIAL POWER BILL BASED ON \$100/BBL FUEL

Based on 1000 kWh residential consumption

**\$359** January 2025

**\$306** February 2025

**\$264** (proposed) September 2025

**GPA will be conducting public outreach meetings in the coming weeks.**

Details will be shared through local media, social media, and GPA's website as they become available.



Scan the QR code to learn more and stay informed.



# Overhead Power Lines are Energized and Dangerous. Contact May Cause Serious Injury or Death.



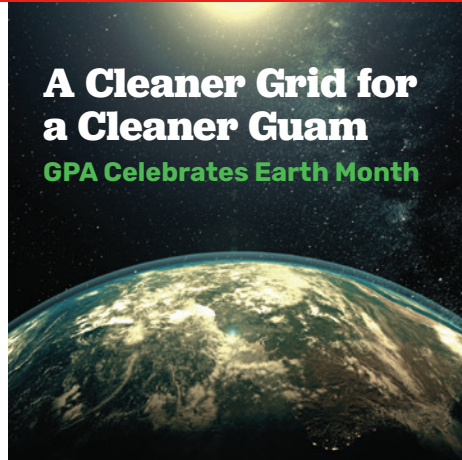
The Guam Power Authority (GPA) urges all customers to take precautions and protect themselves before starting any tree trimming or fruit picking activity at their residences. Customers are reminded that only GPA crews or GPA's authorized contractors should trim trees that are touching or in close proximity to power lines. Please stay away from all downed lines and equipment as they may still be energized and can cause harm if you come in contact with them. Consider such situations as dangerous and life threatening.

The Authority provides the following electrical safety tips:

- Look up and around for power lines before starting any tree trimming or fruit picking activity. If any part of the tree is close to GPA's electrical power lines, the tree may be energized and you should not touch it. **Do not attempt** to pick fruit on trees close to or touching power lines.
- Keep your body, any ladders, fruit pickers or tools away from electrical power lines.
- Keep items such as antennas, kites, model airplanes, and metallic balloons away from power lines to prevent them from getting entangled in the power lines and potentially causing shock, injury or death.
- Properly secure items around your home such as canopies, tarps and tents during high winds to prevent these items from coming in contact with or getting entangled in power lines.
- Avoid planting new trees and bushes underneath or near power lines or electrical equipment.

For your personal safety, please request assistance with tree trimming near power lines or if you see anything caught in a power line, do not try to free it yourself. Please immediately report this situation to GPA's 24-Hour Trouble Dispatch at (671) 475-1472/3/4 or GPA Customer Services at (671) 647-5787/88/89. Please provide the exact location or address, contact information and condition of location.

For more information, please visit [www.guampowerauthority.com](http://www.guampowerauthority.com) or follow us on Facebook and Instagram.



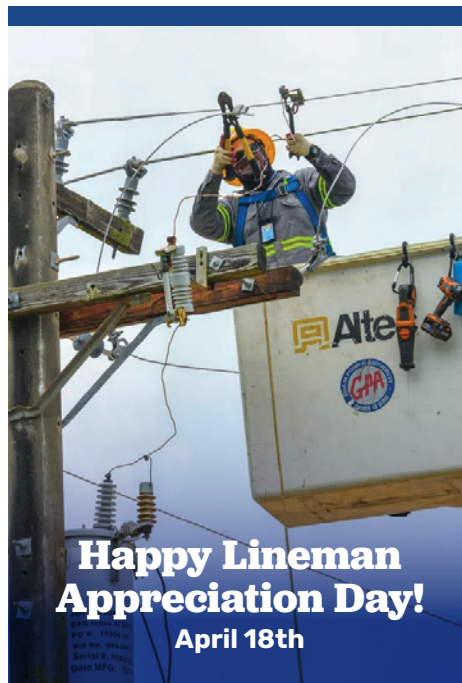
Earth Month is a time to reflect on the steps we can all take to protect the island we call home. GPA recognizes that caring for the environment isn't just about one month. Our mission is to make the long-term investments for a sustainable Guam. That's why GPA continues to push forward on our Clean Energy Master Plan and our roadmap that guides our transition to 100% renewable energy by 2035. One major step in that direction is the replacement of aging generators with more efficient, flexible power systems that can better integrate solar and other renewable sources.

When the Ukudu Power Plant comes online, it is expected to save over 900,000 barrels of fuel each year. That means fuel cost savings, fewer emissions, and fewer shipments of imported fossil fuels into our ports. Every improvement to our generation system makes Guam's grid cleaner, more efficient, and more resilient.

And that's just one piece of the puzzle. GPA's commitment to solar contracts under Phase IV will bring even more solar power to the island, helping us reduce dependence on oil for Guam's energy future. In the years ahead, GPA will continue to modernize our grid to handle more clean energy, strengthen our reliability, and move closer to our goal of 100% renewables.

As we celebrate Earth Month, we invite you to take part in the progress too. Reducing energy use at home, switching to paperless billing, and using tools like MyEnergyGuam.com are small steps that add up to big impact. Together, we can make Guam cleaner, greener, and more energy-secure for the next generation.

Visit [www.guampowerauthority.com](http://www.guampowerauthority.com) for more ways to do your part for Guam's energy future.



## GPA Gallery



GPA's Communications and Transmission & Distribution (T&D) teams visited DL Perez and BP Carbullido Elementary Schools for Career Day on March 6 and 20, 2025. Students were introduced to various careers at GPA, including line workers and other T&D professionals.

The team shared energy-saving tips and the importance of conserving power during peak hours from 5 PM to 11 PM. Students learned different ways they could "Beat-the-Peak" and help reduce overall energy demand.

T&D linemen also showcased their tools, safety gear, and a bucket truck demonstration, giving students a firsthand look at how they work on power lines. To wrap up, students shared what they learned and received energy-themed giveaways.

## GPA GOVERNANCE & LEADERSHIP

Your elected Consolidated Commission on Utilities (CCU) holds two (2) working sessions and one (1) regular meeting monthly. Meeting location is the CCU Conference Room, Gloria B. Nelson Public Service Building in Fadian, Mangilao. For more information and agencies, call the CCU Board Secretary at (671) 648-3002 or visit [www.guamccu.org](http://www.guamccu.org).

**Francis E. Santos (Chairman)**

T (671) 482-9355 • E [francis.santos@gpagwa.com](mailto:francis.santos@gpagwa.com)

**Pedro Roy Martinez (Vice Chairman)**

T (671) 488-1957 • E [prmgua@gmail.com](mailto:prmgua@gmail.com)

**Melvin F. Duenas (Secretary)**

T (671) 777-8400 • E [melvinduenas@gmail.com](mailto:melvinduenas@gmail.com)

**Simon A. Sanchez II (Commissioner)**

T (671) 488-1010 • E [gdcmgr@guamdrycleaners.com](mailto:gdcmgr@guamdrycleaners.com)

**Michael Limtiaco (Commissioner)**

T (671) 888-6280 • E [mllimtiaco671@gmail.com](mailto:mllimtiaco671@gmail.com)

**John M. Benavente, P.E. (General Manager)**

T (671) 648-3225 • E [jbenavente@gpagwa.com](mailto:jbenavente@gpagwa.com)

View your energy usage at [myenergyguam.com](http://myenergyguam.com)

